

YACHT

SANLORENZO

SX

100/

SX
100/



SX
100/



SX
100/



SX 100/



SX
100/



SX 100/



SX
100/



SX 100/



SX 100/



SX
100/



SX
100/



SX 100/



SX
100/



SX
100/



14. Cockpit





16. Lower deck lounge



17. Lower deck lounge



18. Lower deck lounge



19. Lower deck lounge



20. Lower deck lounge

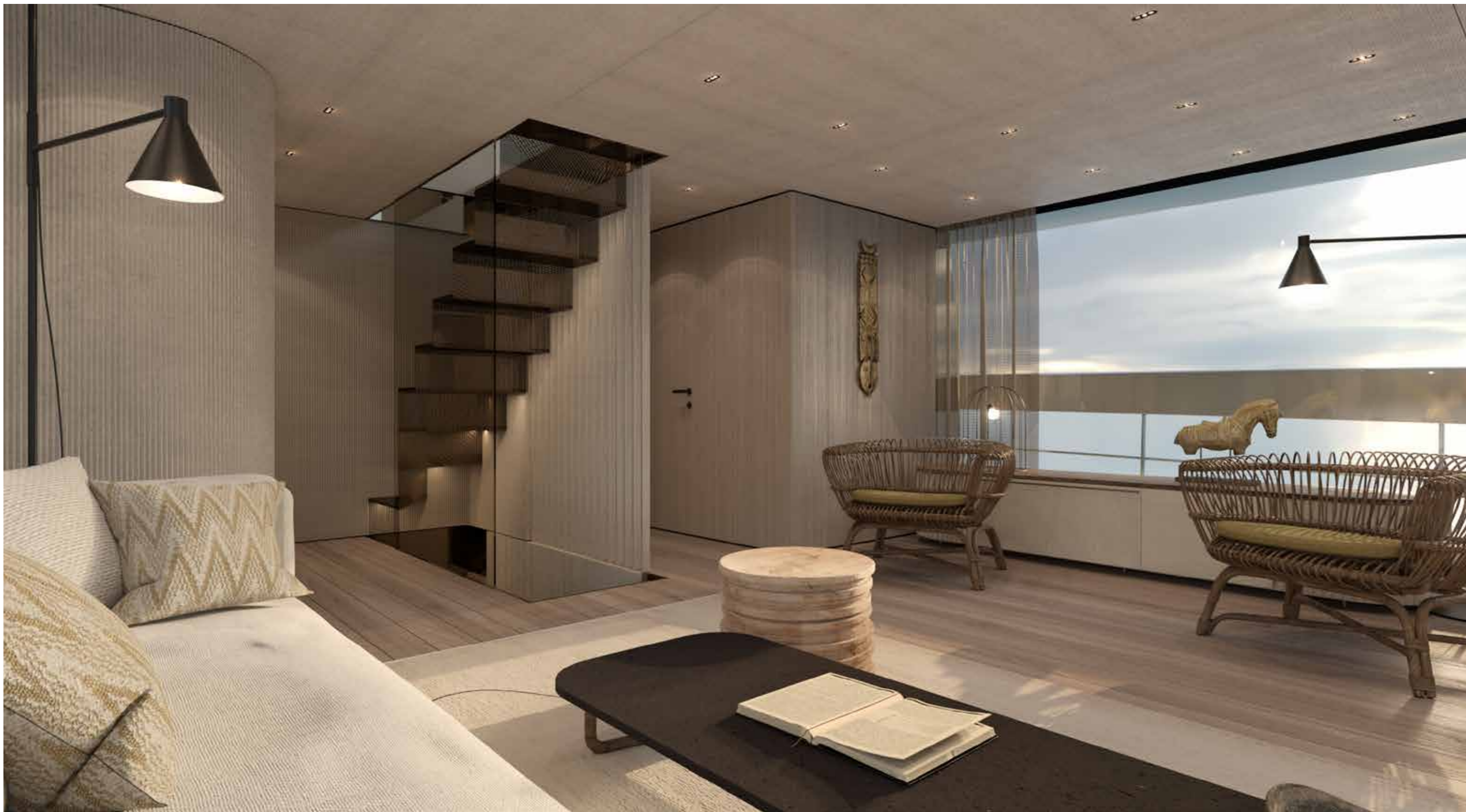


21. Lower deck lounge



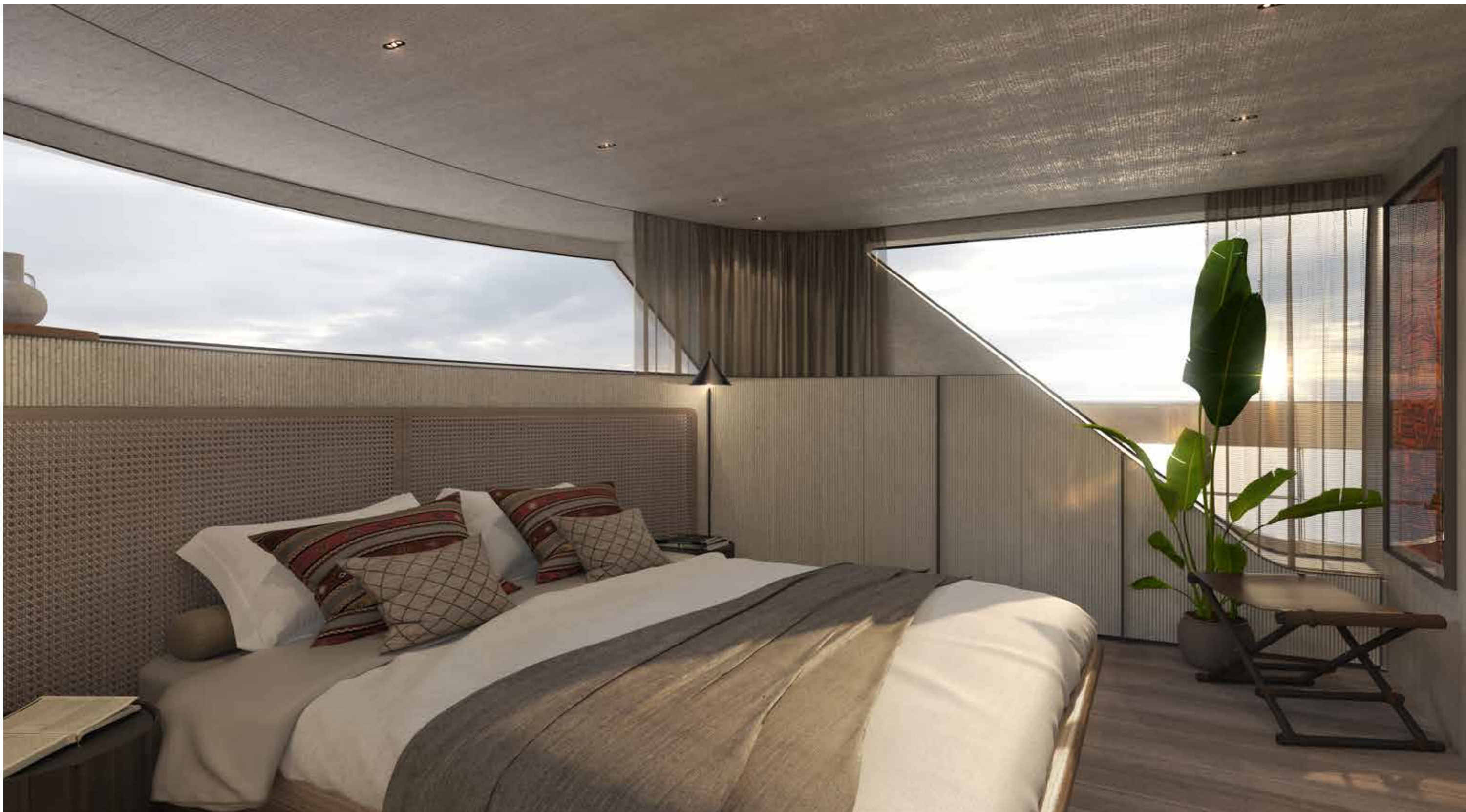
22. Lower deck lounge

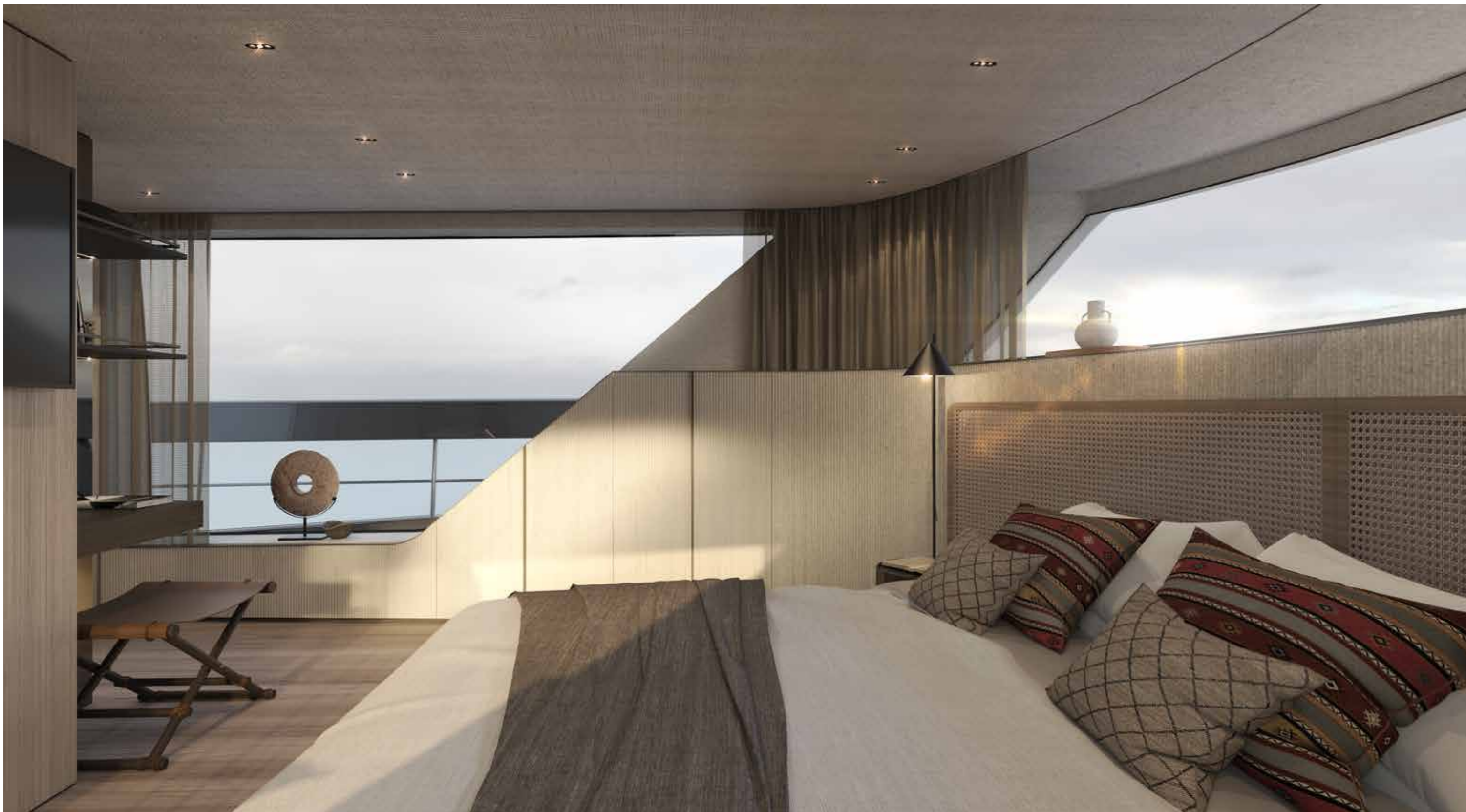




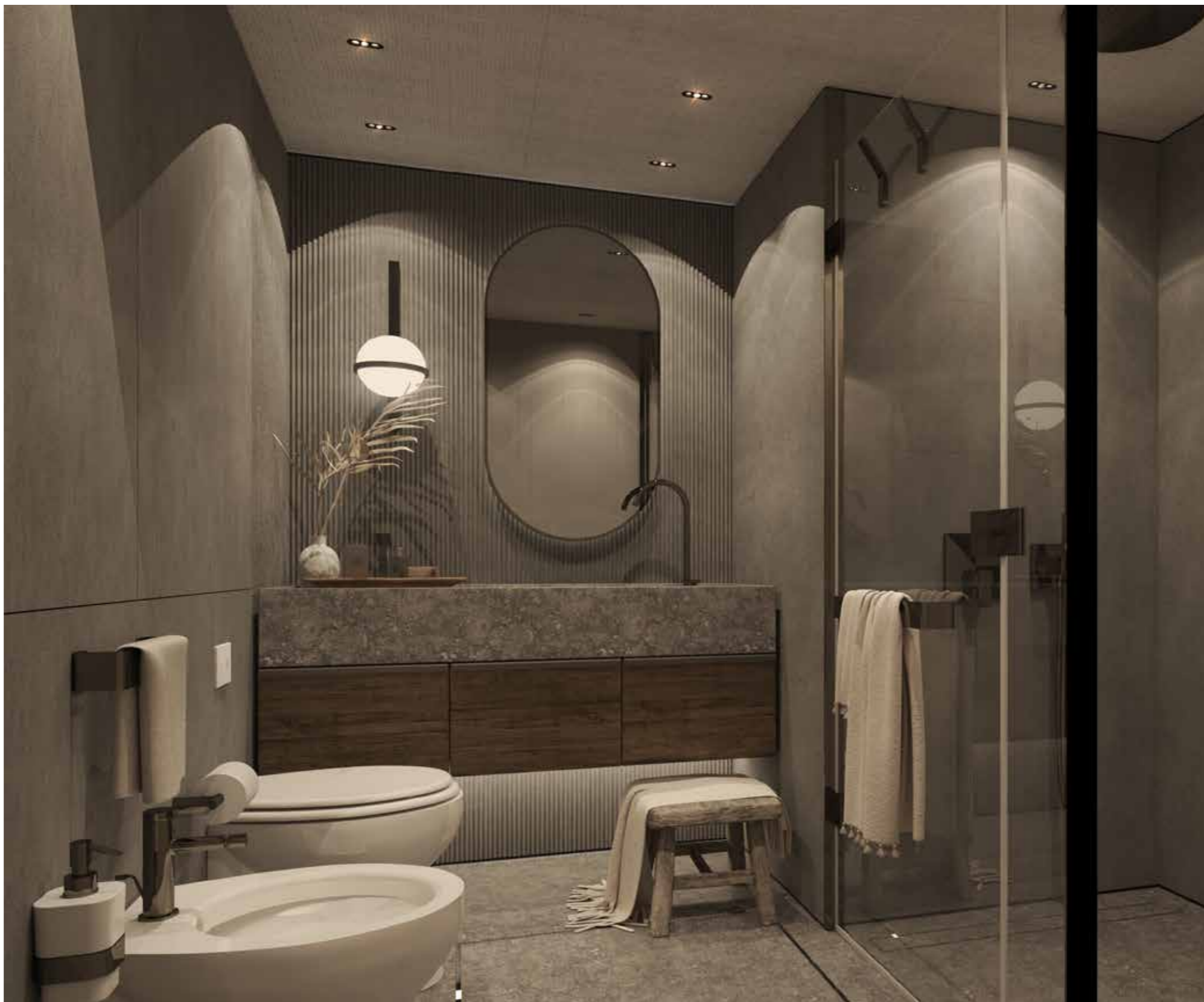


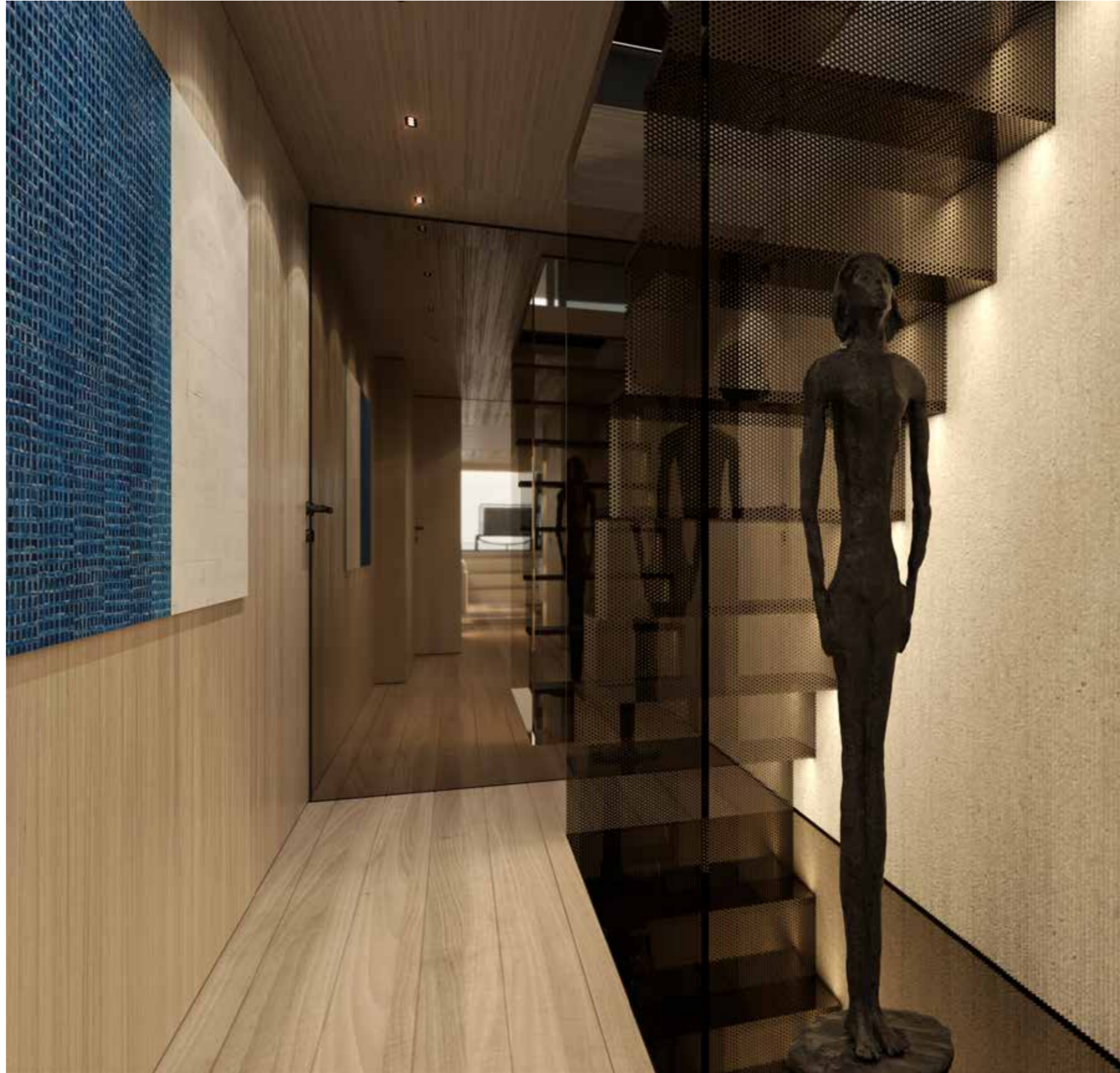












SX
100/



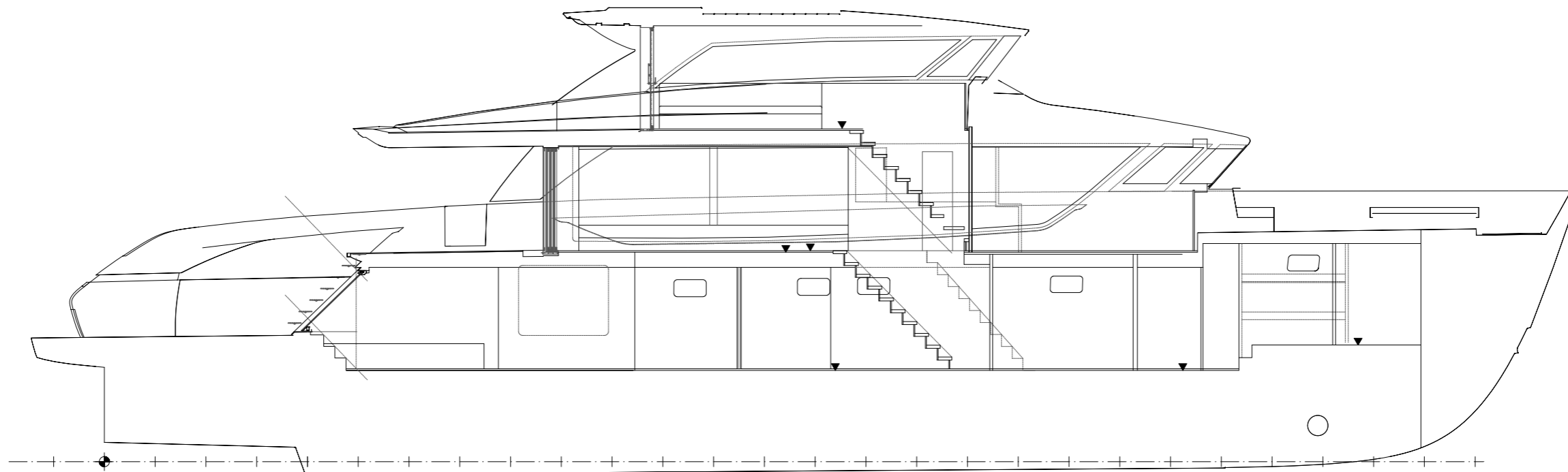
SX
100/



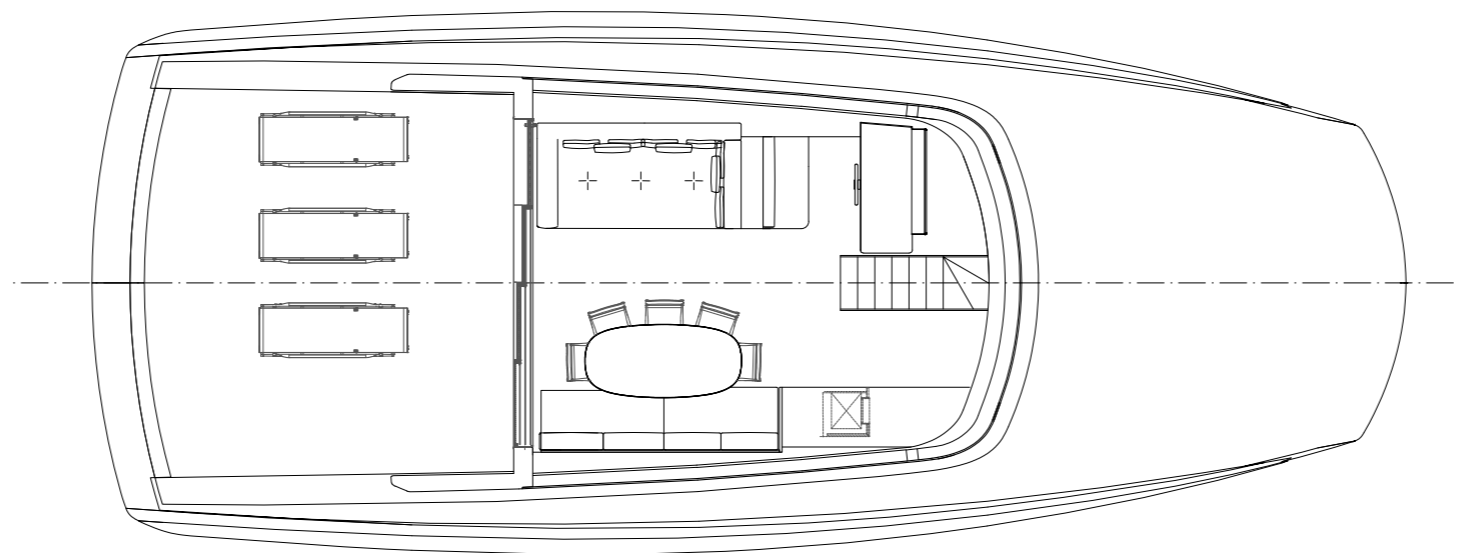
SX
100/



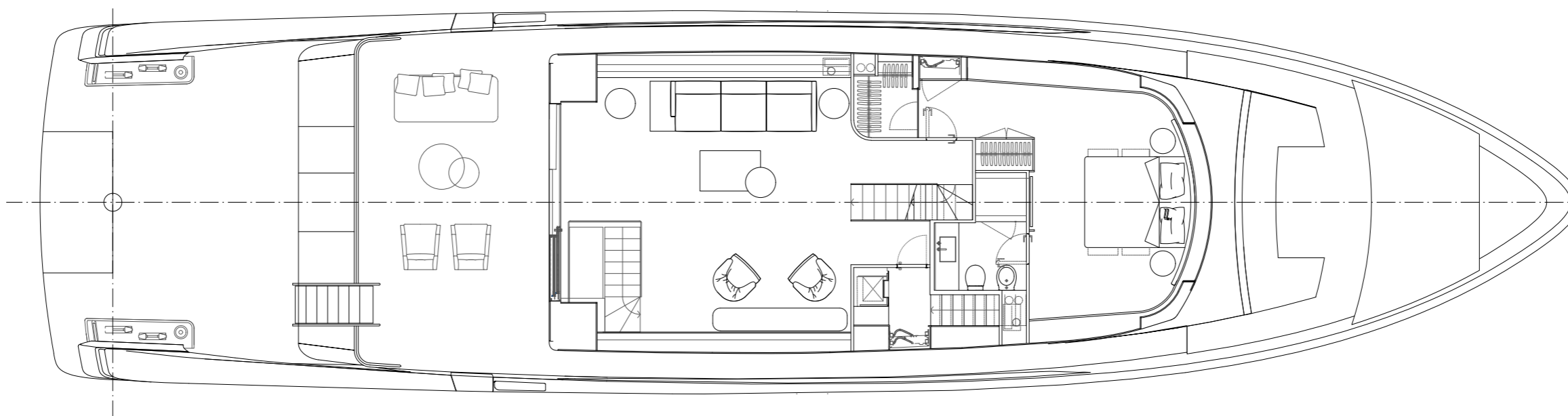
Profile



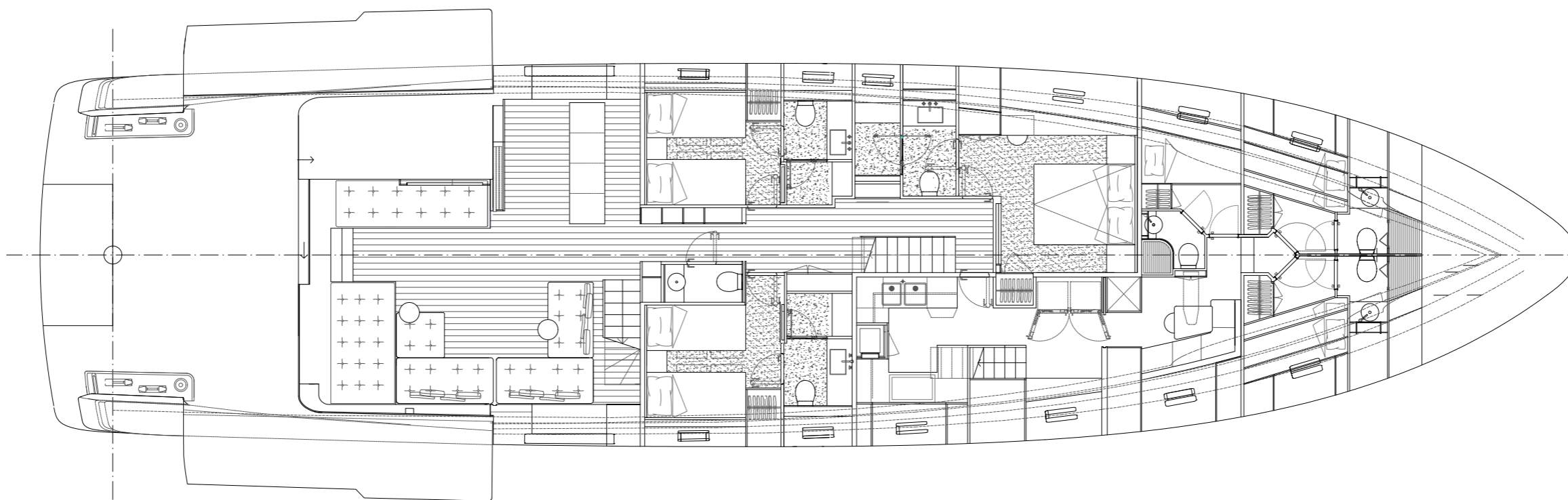
Flying bridge



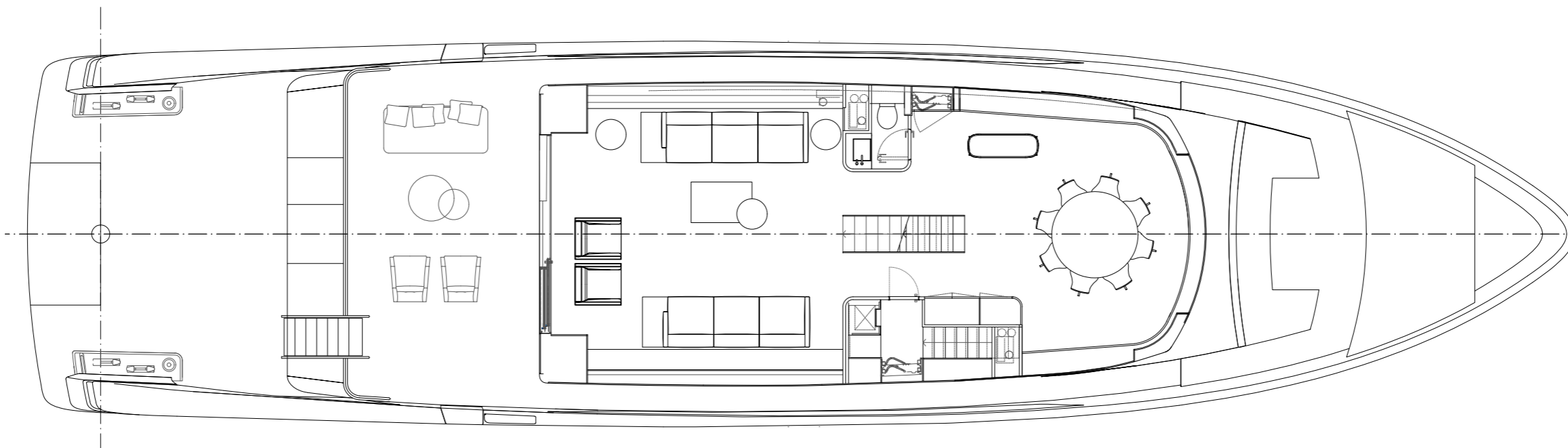
Main deck



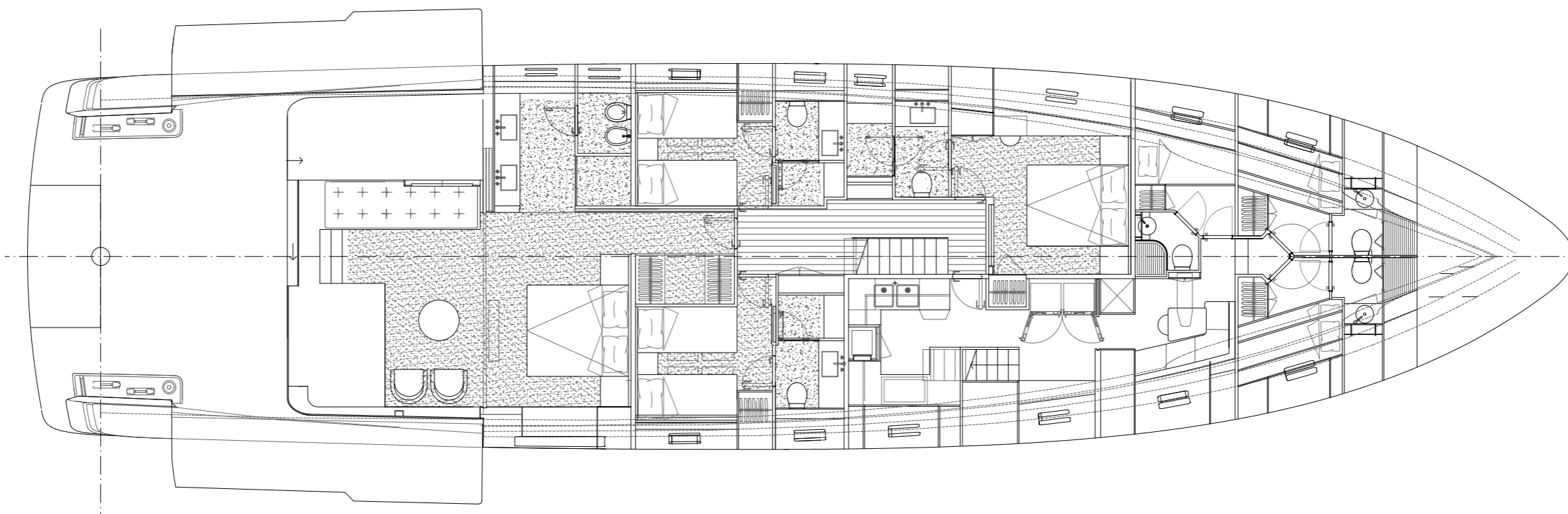
Lower deck



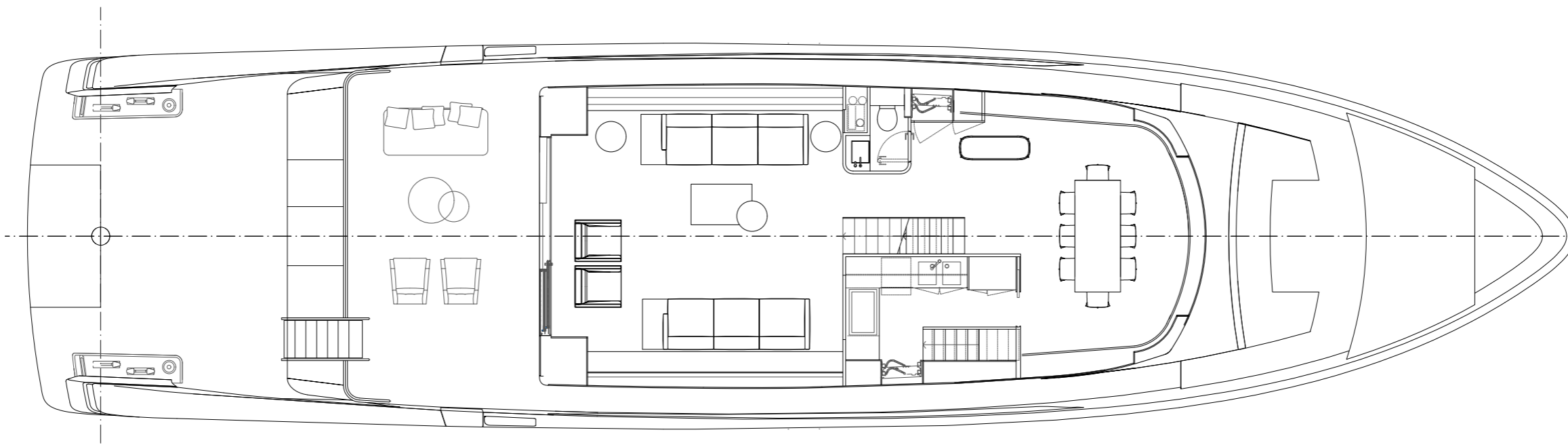
Main deck



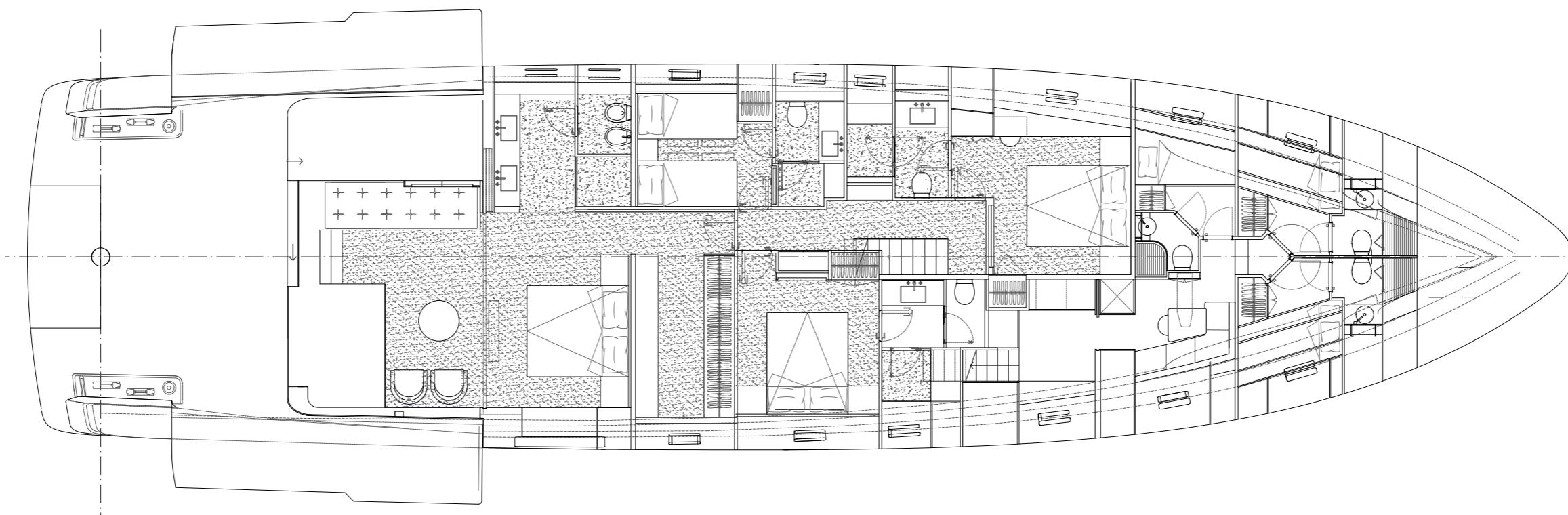
Lower deck



Main deck



Lower deck



Length overall	30,53 m
Maximum beam	7,60 m
Construction height	4,20 m
Displacement @ half load	126 t
Displacement @ full load	134 t
Waterline length @ half load	27,50 m
Waterline length @ full load	27,52 m
Draught @ half load	1,97 m
Draught @ full load	2,03 m
Guest accomodation	8 people
Crew accomodation	5 people
Engine	4 X IPS3 I050 D13B - 800 HP
Consumption (approx) (**)	500 l/h @ 2200 rpm
Power output @ 100% MCR (approx.)(**)	2352 kW @ 2400 rpm
Gearbox	-
Transmission	4 x IPS
Propeller	Volvo IPS propellers
Shafts	-
Gensets	1 X 45 KW 50 HZ + 1 X 55 KW 50 HZ
Rudders	-
Maximum speed (approx.)(***)	23 kn
Cruising speed (approx.)(***)	20 kn
Economic speed (approx.)(***)	10 kn
Max range @ economic speed (approx.)(***)	1400 nm
Deadrise	13°
A/C power	180000 btu/h
Fuel capacity	14500 l
Fresh water capacity	2050 l
Grey water capacity	950 l
Black water capacity	550 l
Tender length	max. 5,65 m
Tender weight	max. 1400 kg

* Displacement data refers to a yacht with standard fit out as described in the sales specification
 ** Main engine performance data and characteristics are derived from the manufacturer's specification
 *** Speed data refer to a yacht with standard fit out as described in the sales specification, considering a third of liquid weight, a third of luggage weight (25kg per bed) and 5 crew members (80kg each), and without stabilization system and hardtop.

This brochure shall not be regarded as a contractual offer regarding the sale of yachts from the shipyard to individuals or companies. All the information contained in this brochure, including without limitation any technical or performance data, pictures, and drawings, are mere indications with no contractual value.

This document is based on the information available at the time it is published. In spite of the commitment aimed at guaranteeing maximum possible accuracy, the information contained herein may not cover all the details and any technical-commercial modifications introduced after printing, or may describe features that are not present.