

YACHT

SANLORENZO

SP

110/

The SP Line has been conceived for customers who love smart performance yachts.
It embodies the Sanlorenzo view, in which its founding principles of sustainability,
comfort and exclusivity converge.

Less Weight / Less Power / Less Consumption

The SP smart principles

1.

A stunning unmistakable design combining the Lissoni indoor decor together with the Zuccon outdoor design without compromises.

2.

Sandwich lamination by infusion to maximize the construction strength and reduce the total weight.

3.

Fractioned engines power pack to reach the best performances at the lowest fuel consumption. SCR exhaust system to reduce NO_x.

4.

Water jet propulsion for top efficiency and comfort at every speed range.

5.

Solar panels (optional) to supply power to the Lithium battery pack to run the hotel loads.

SP
110/



SP
110/



SP
110/



SP
110/



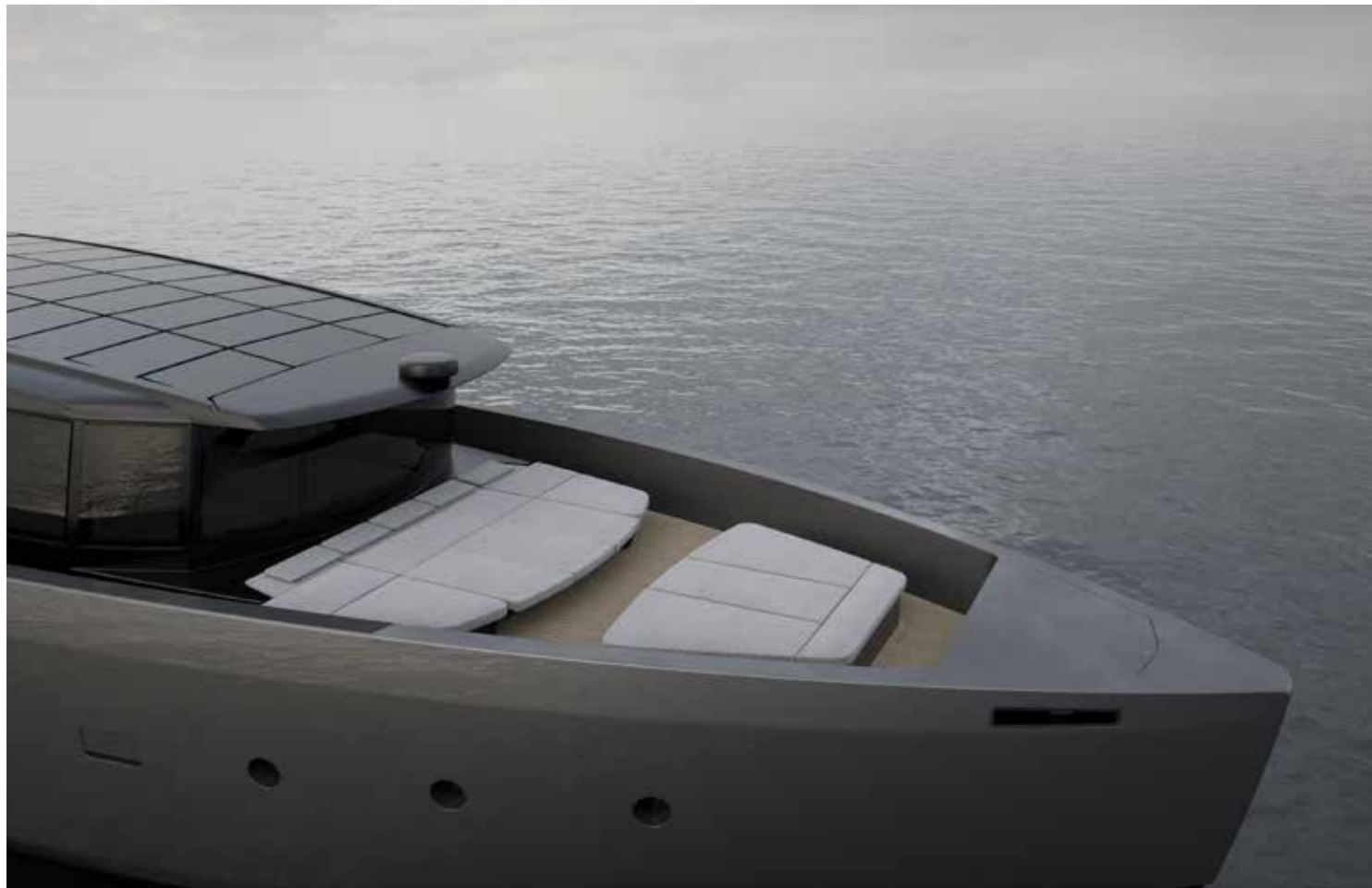
SP 110/

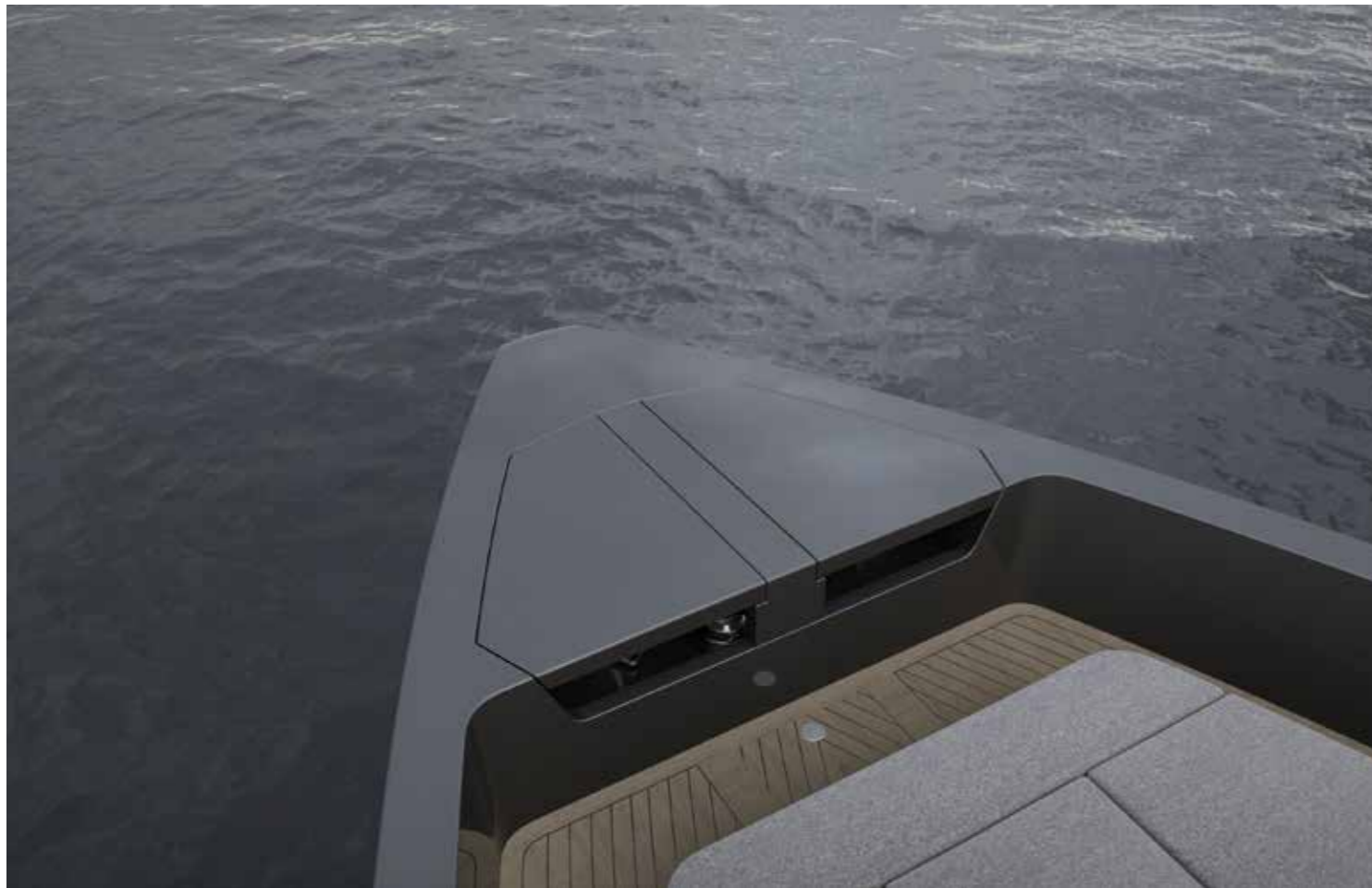


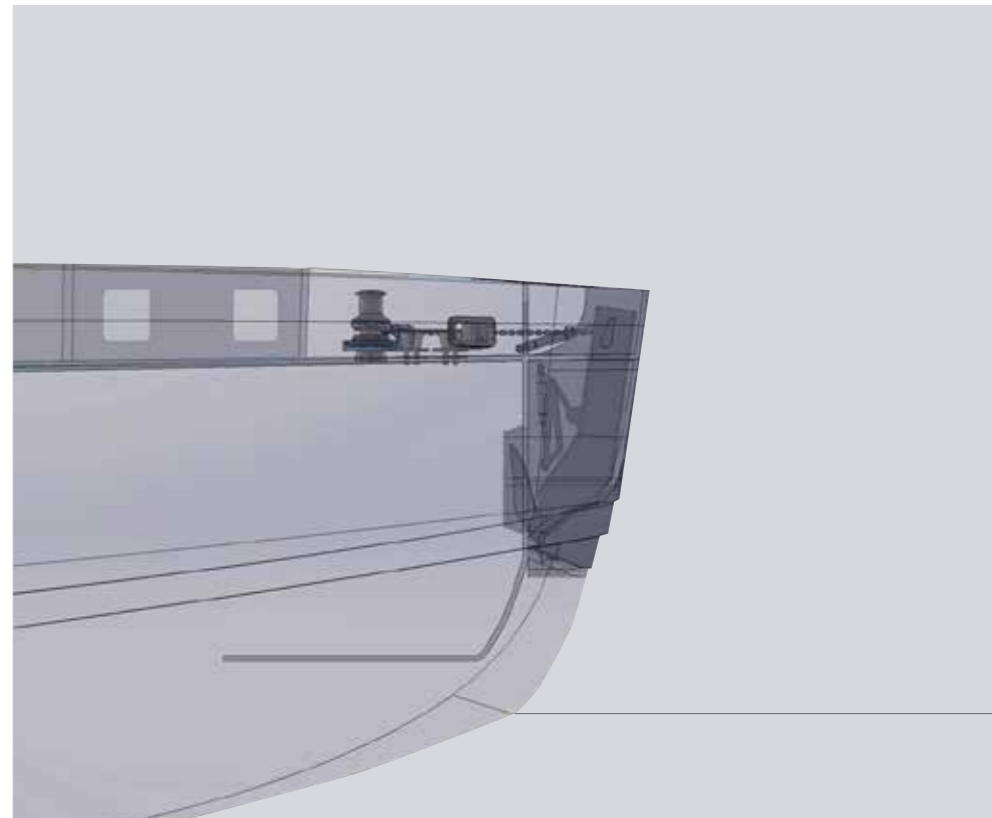
SP 110/











SP 110/



11. Side openings

SP
110/







SP
110/





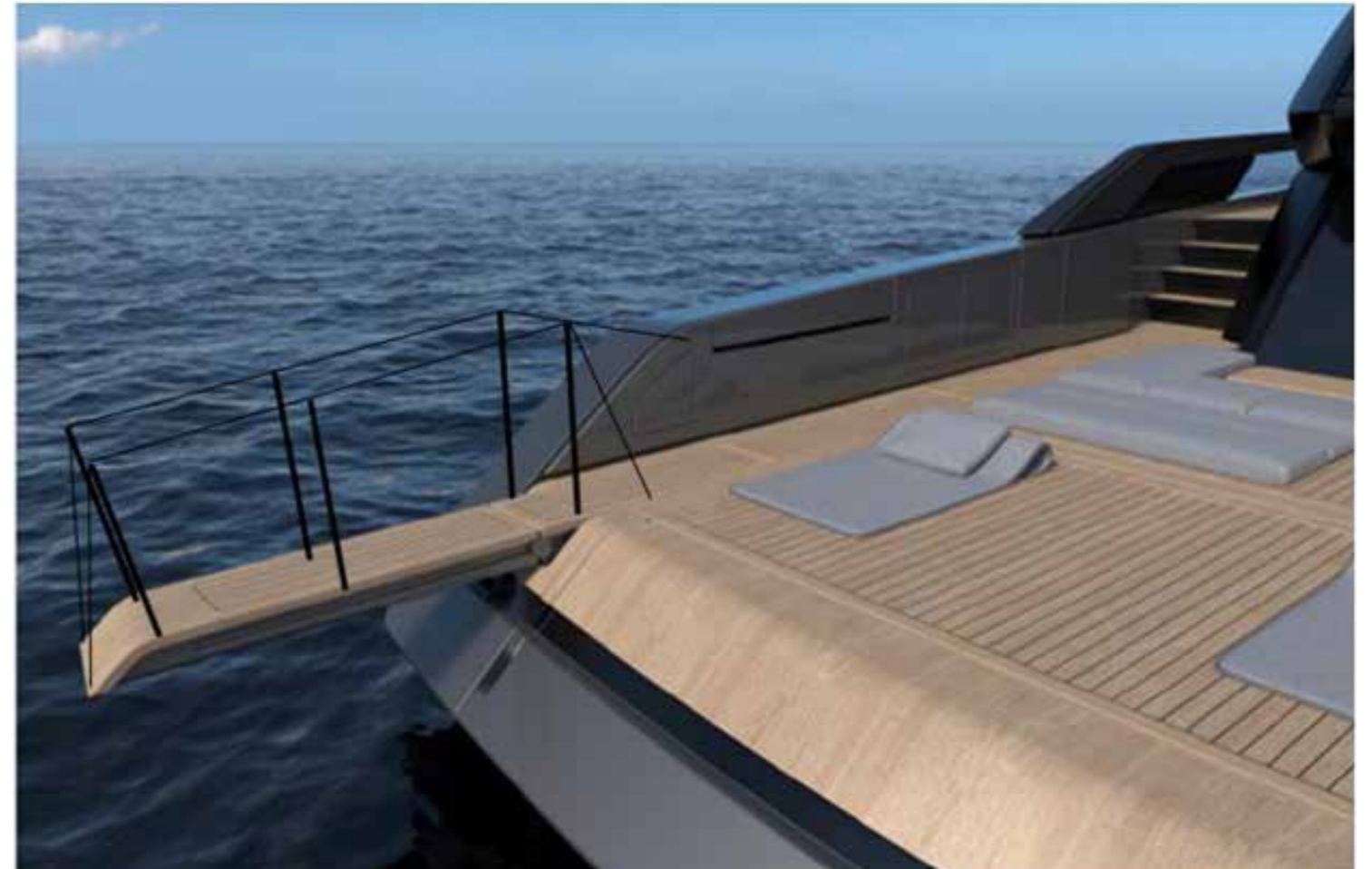
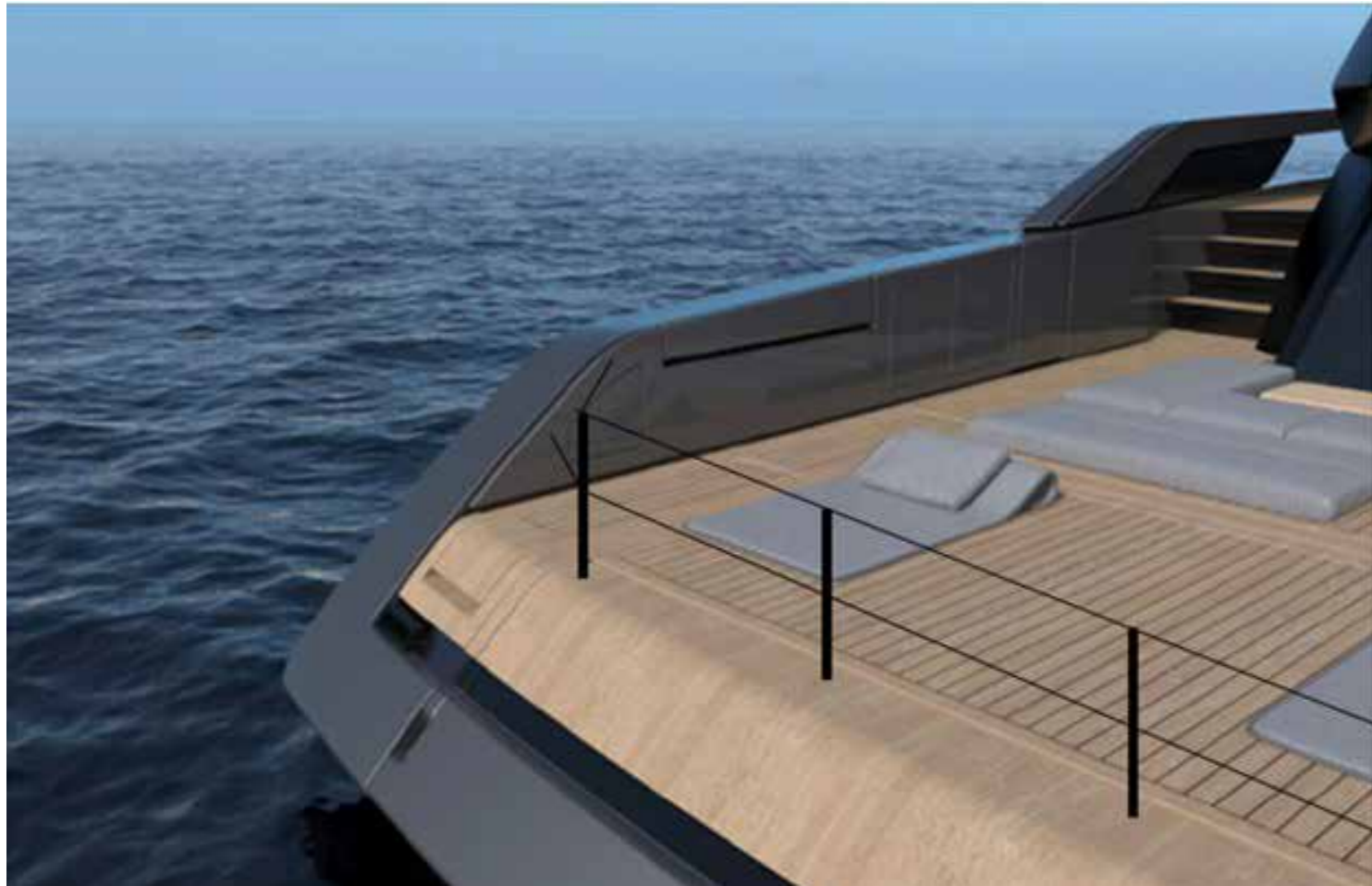


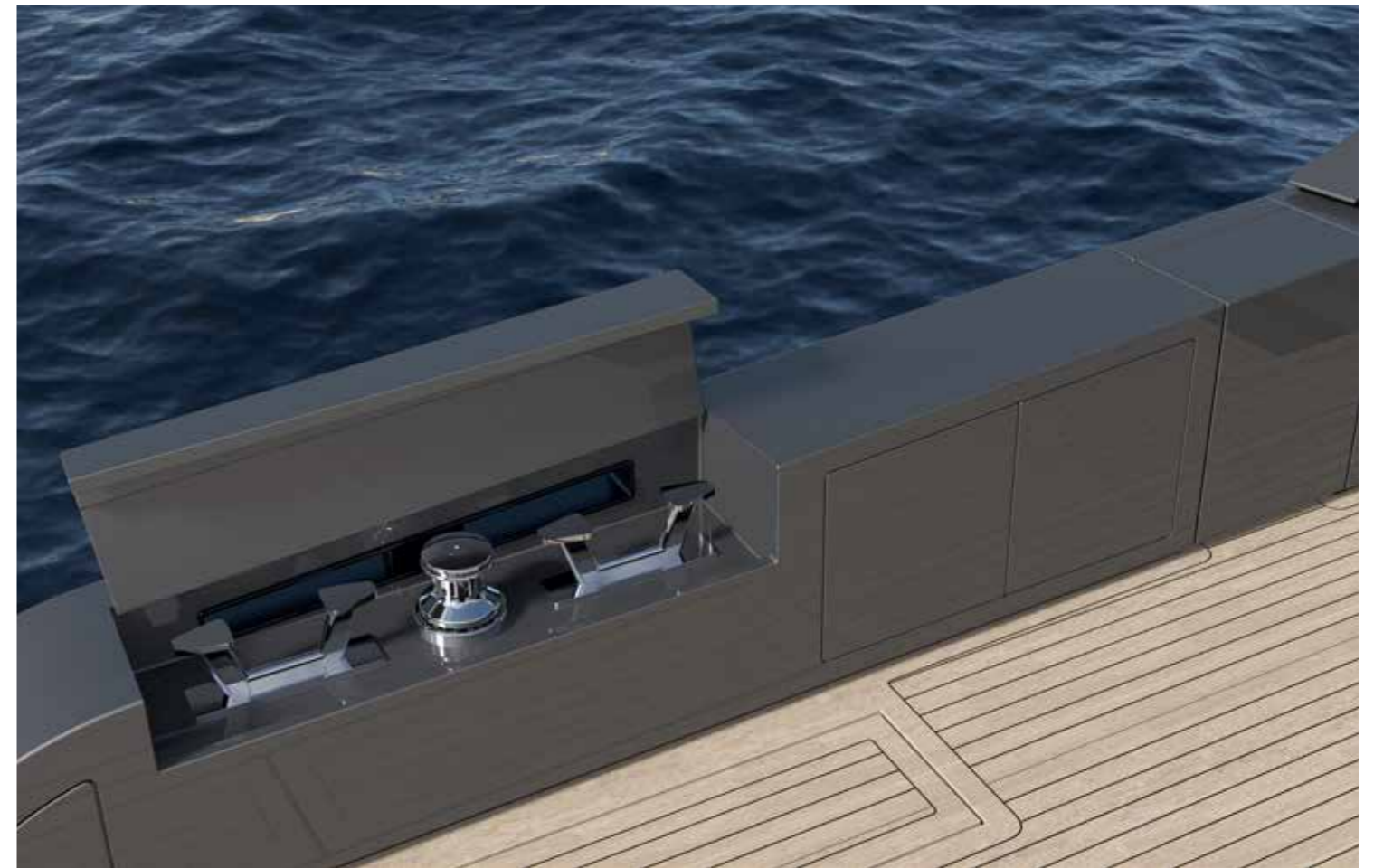
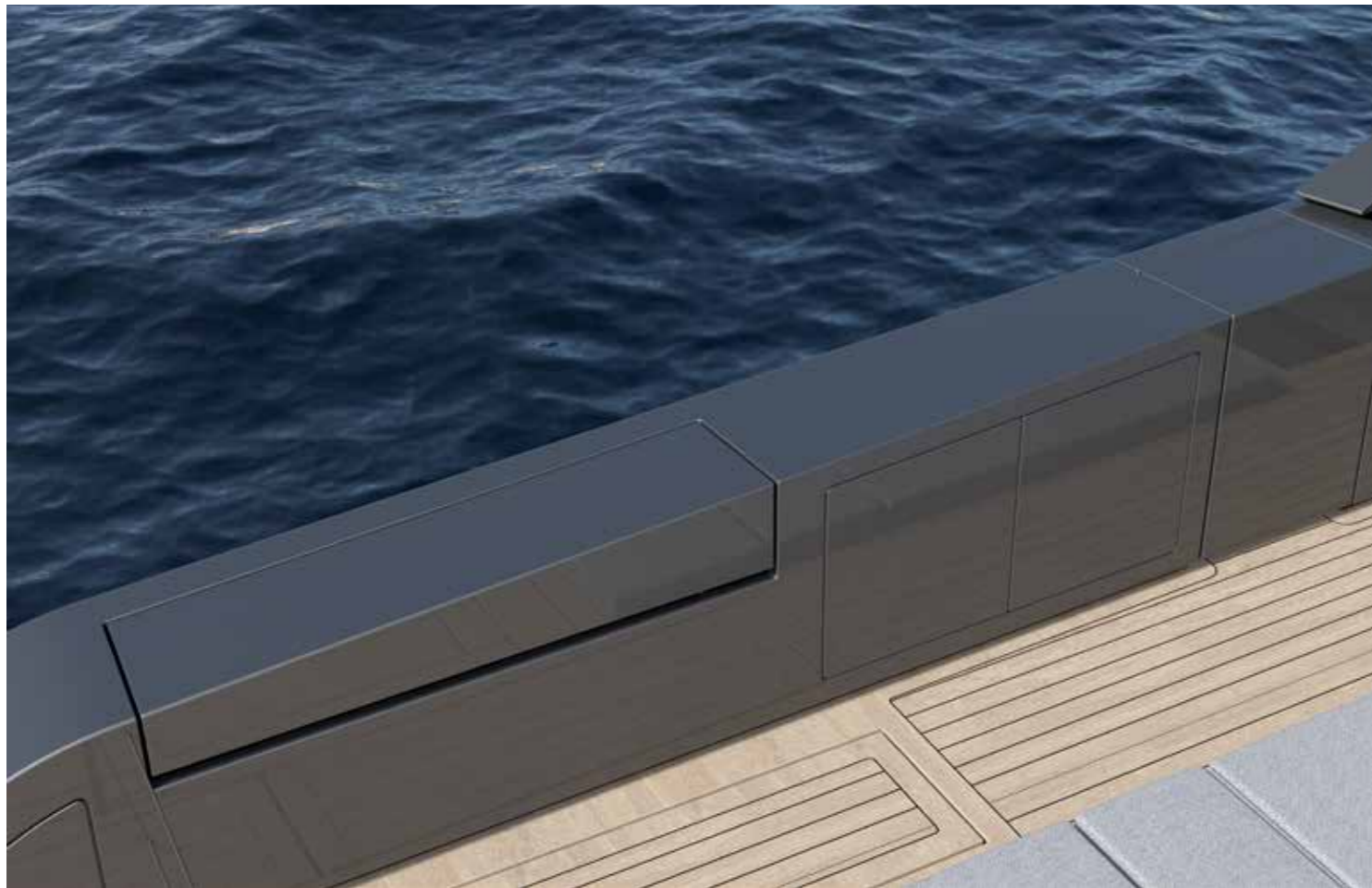


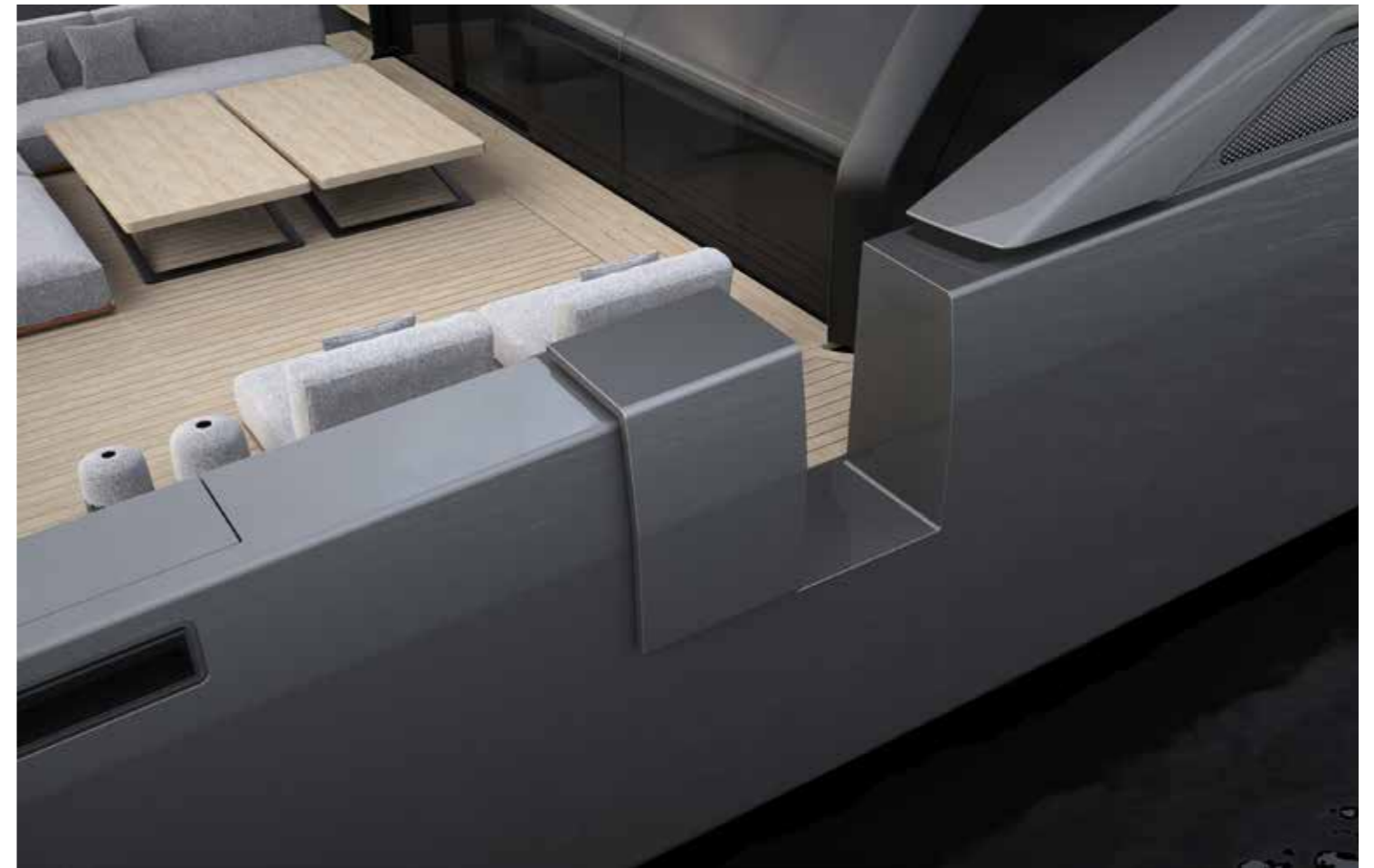


SP
110/





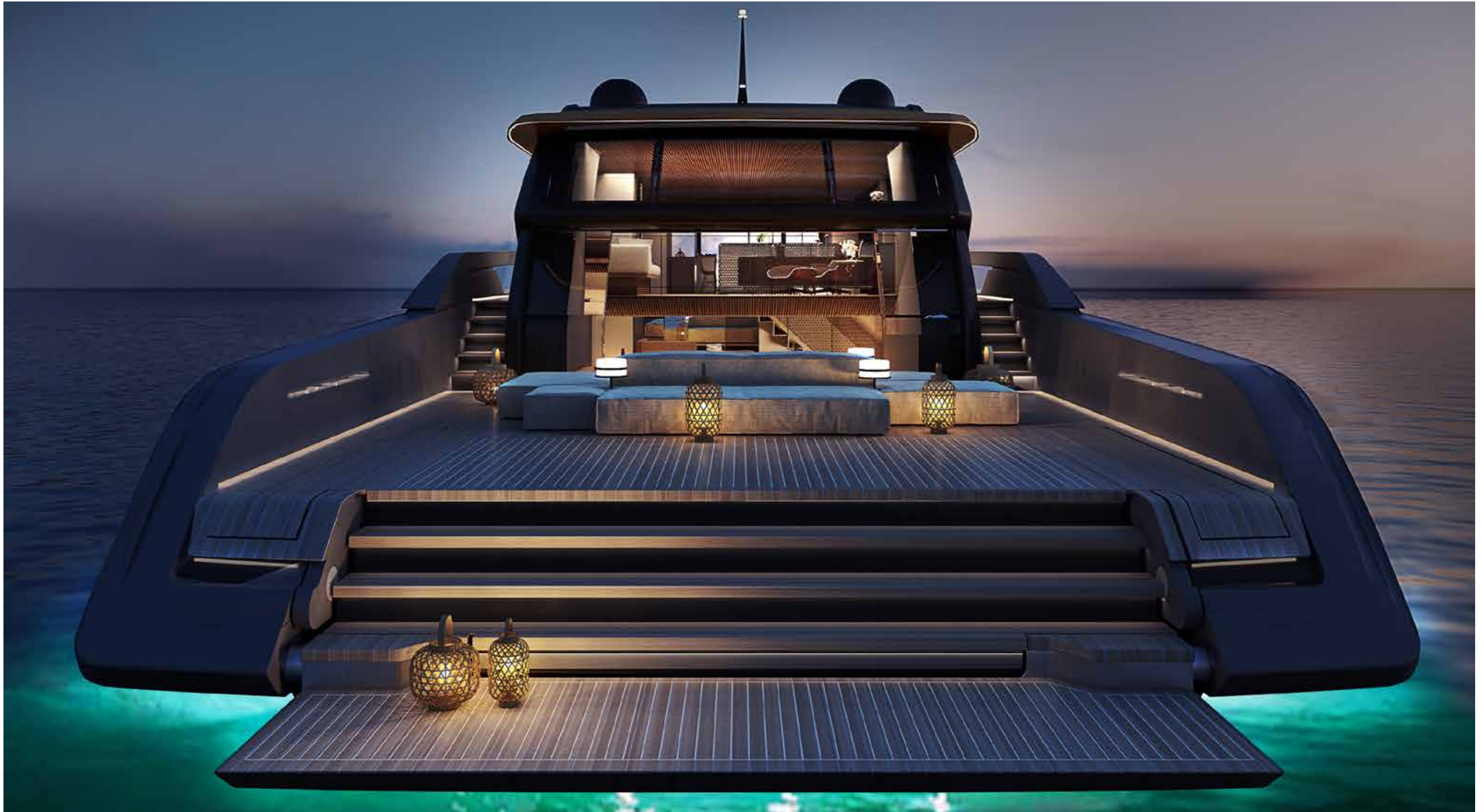




SP
110/



SP
110/



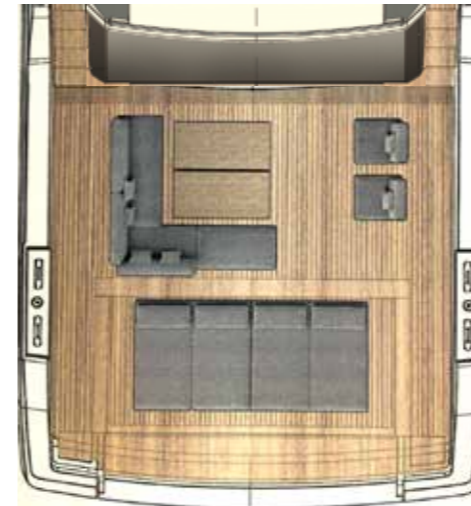
SP
110/



Solution A



Solution B



SP
110/





SP
110/

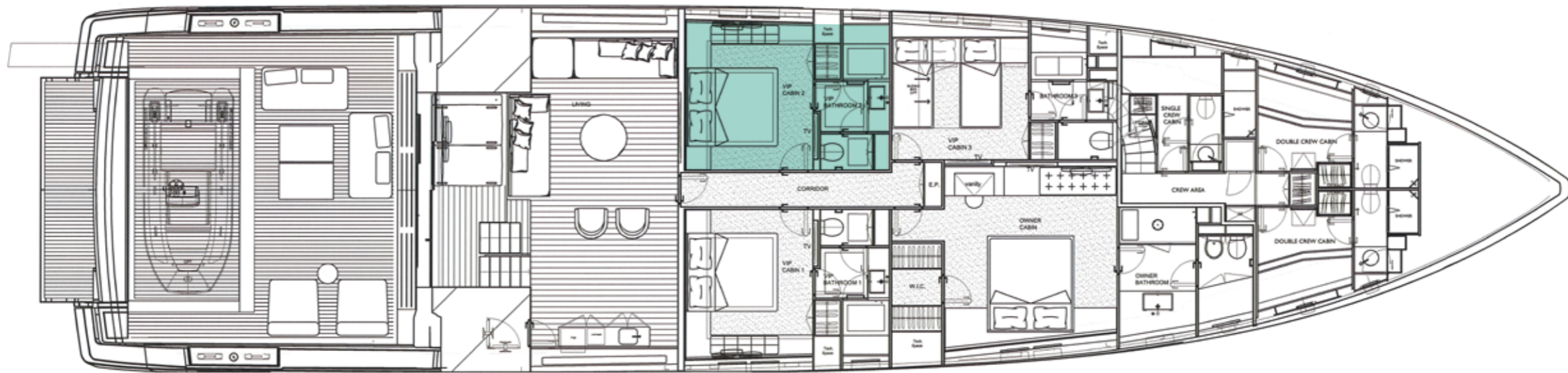


30. Multilevel lounge





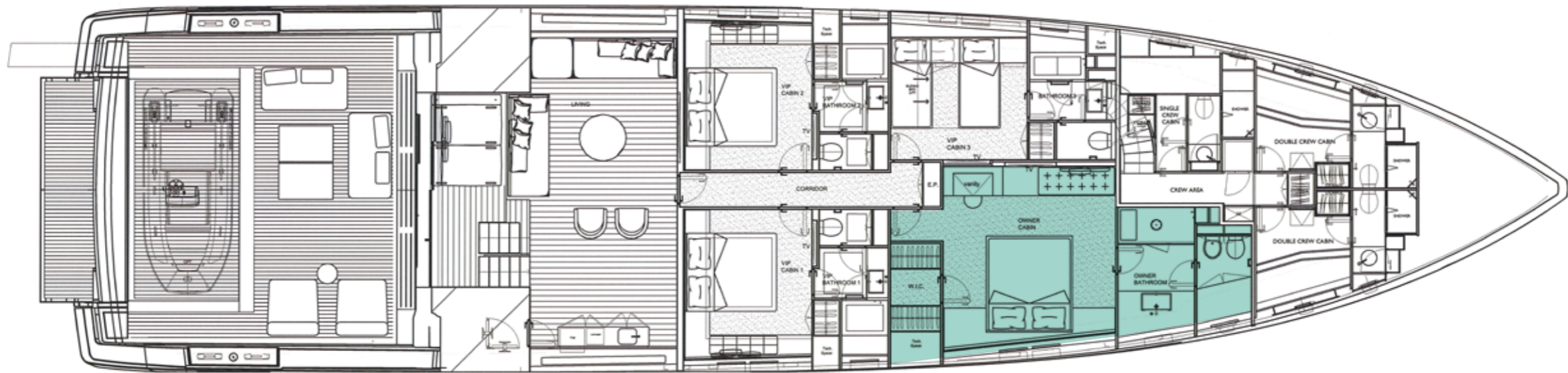
step on
board





SP
110/



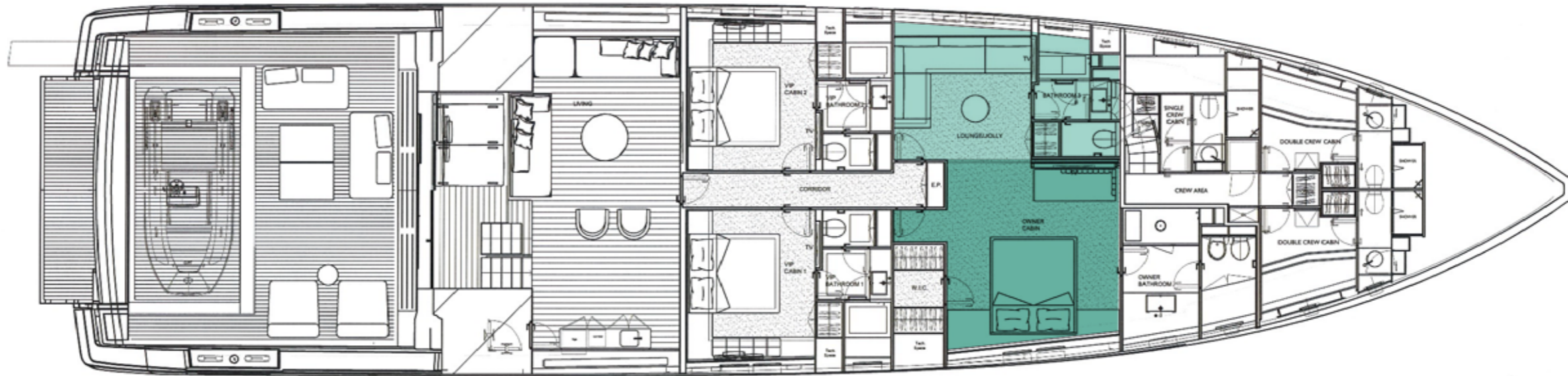


SP
110/



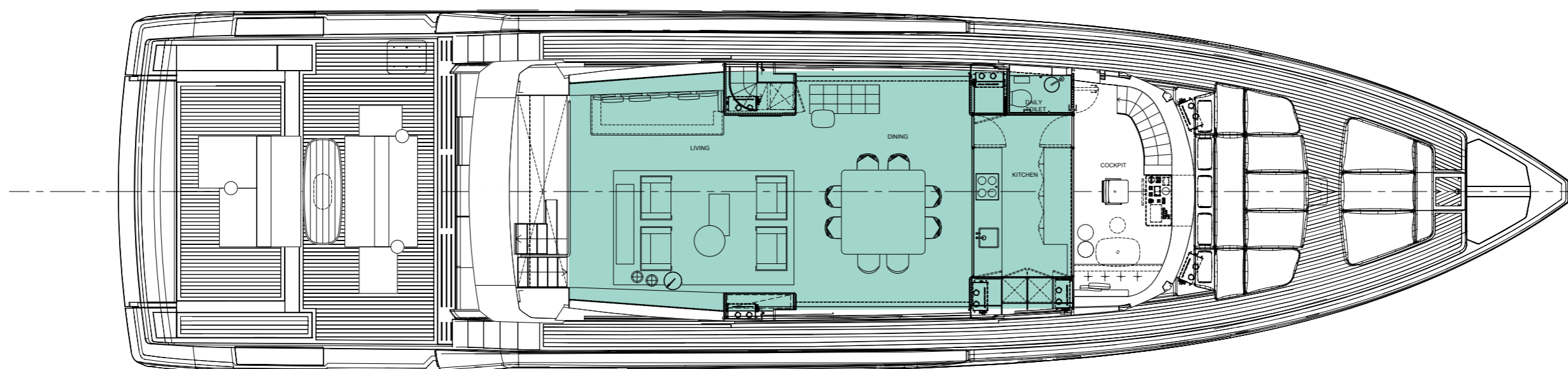
38. Owner's cabin











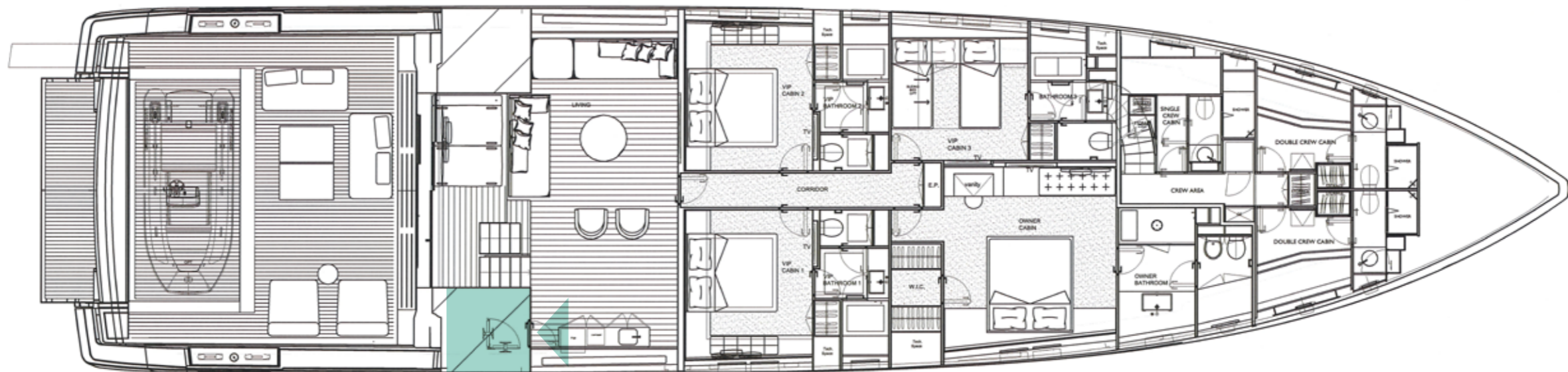


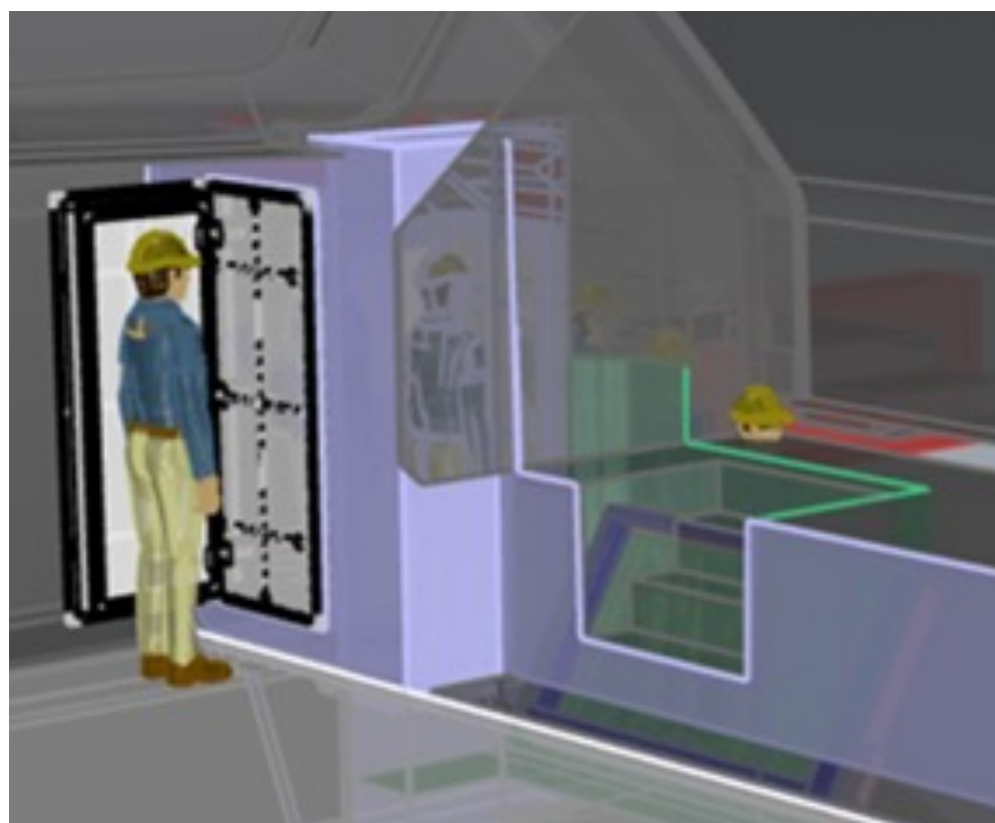
SP
110/



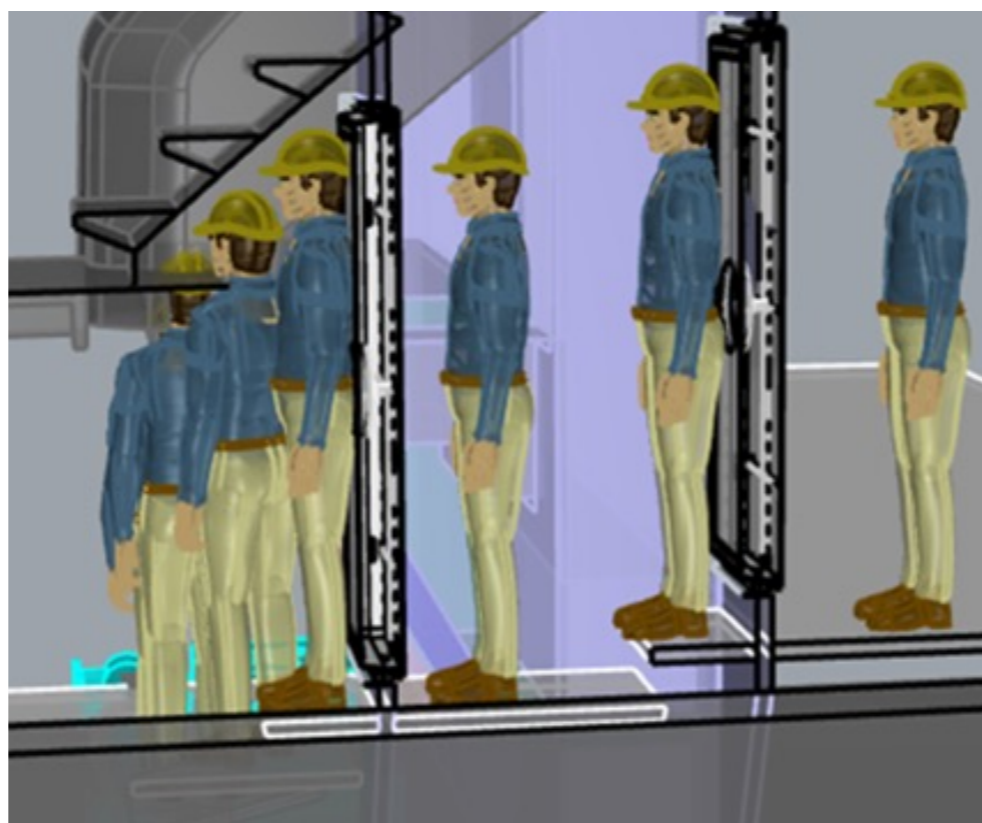


engine
room

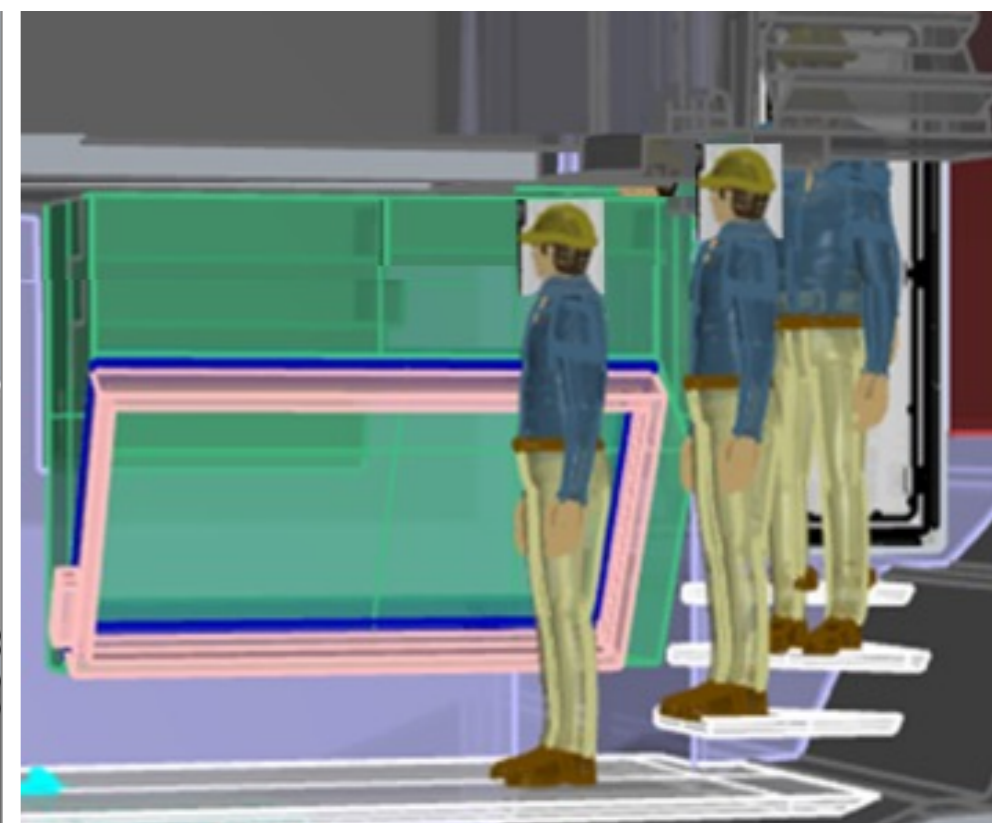




Lounge starbord side



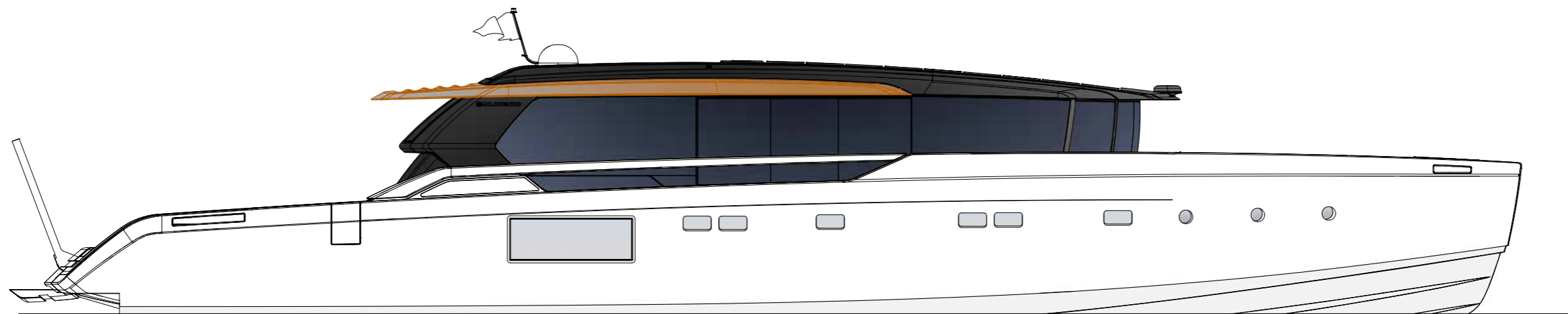
Double door to access display pad



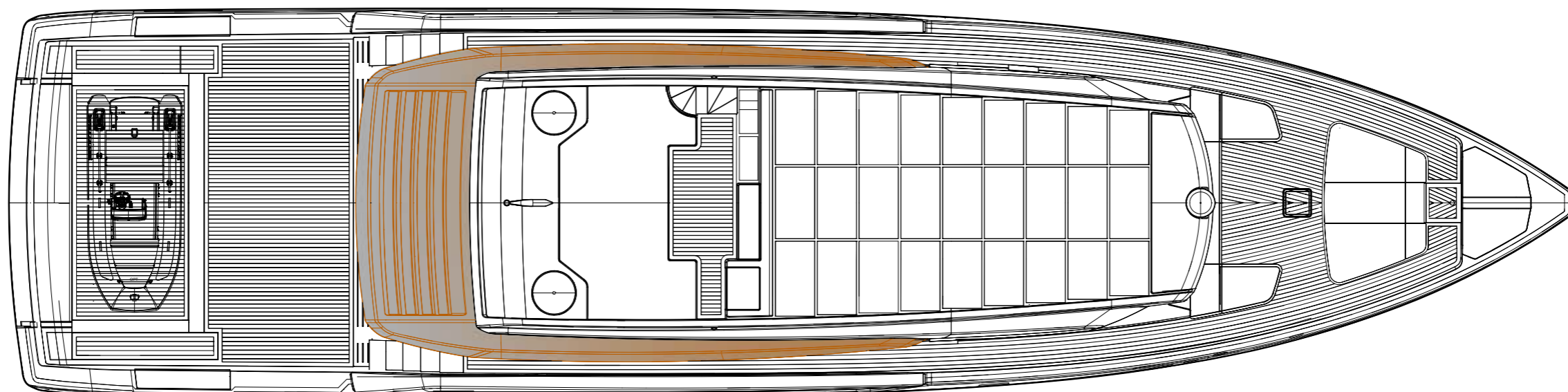
Engine room staircase

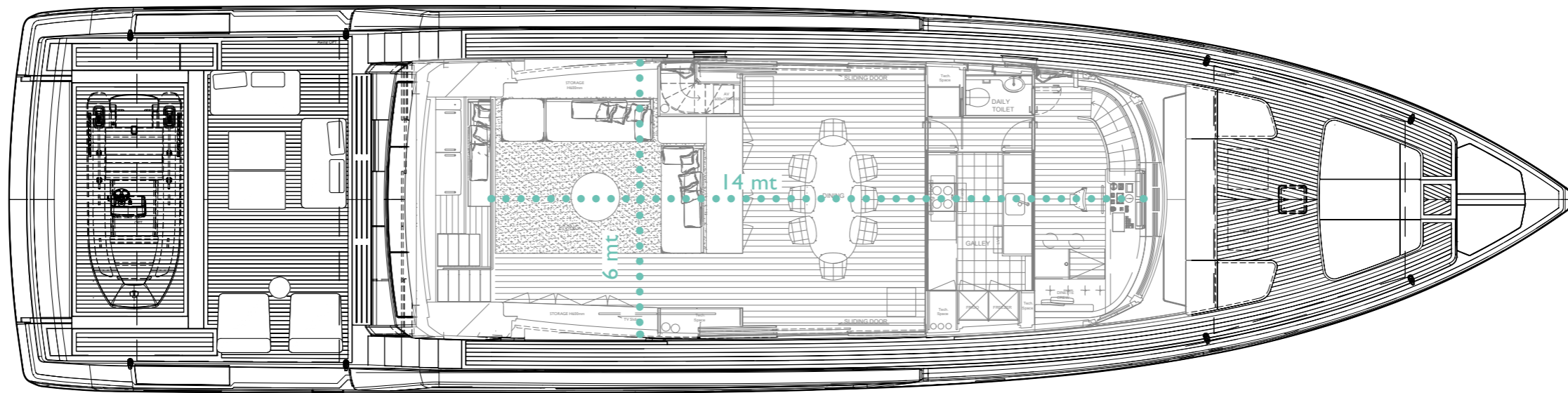
General arrangements & main technical data

SP 110/

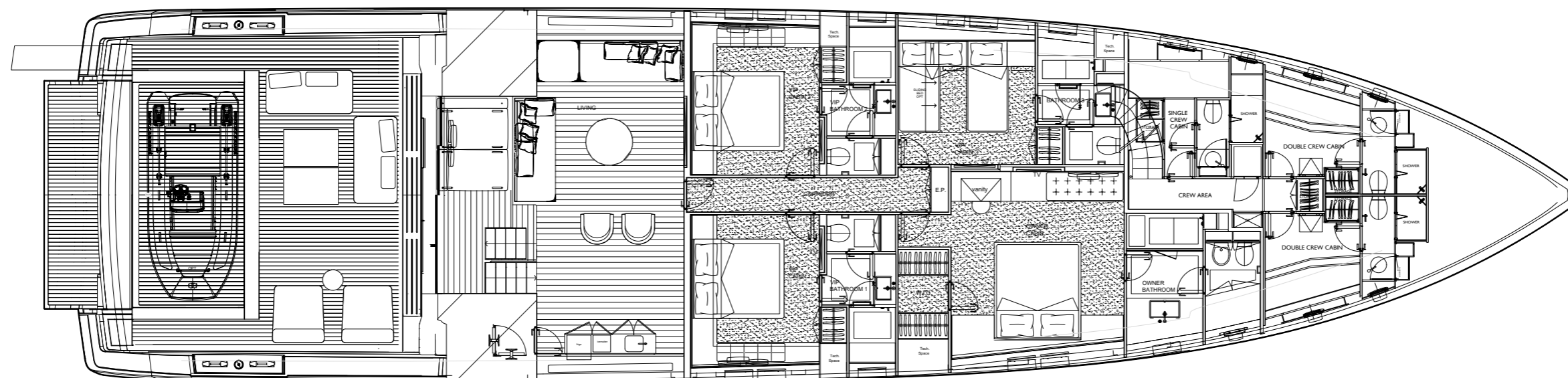


Flying bridge

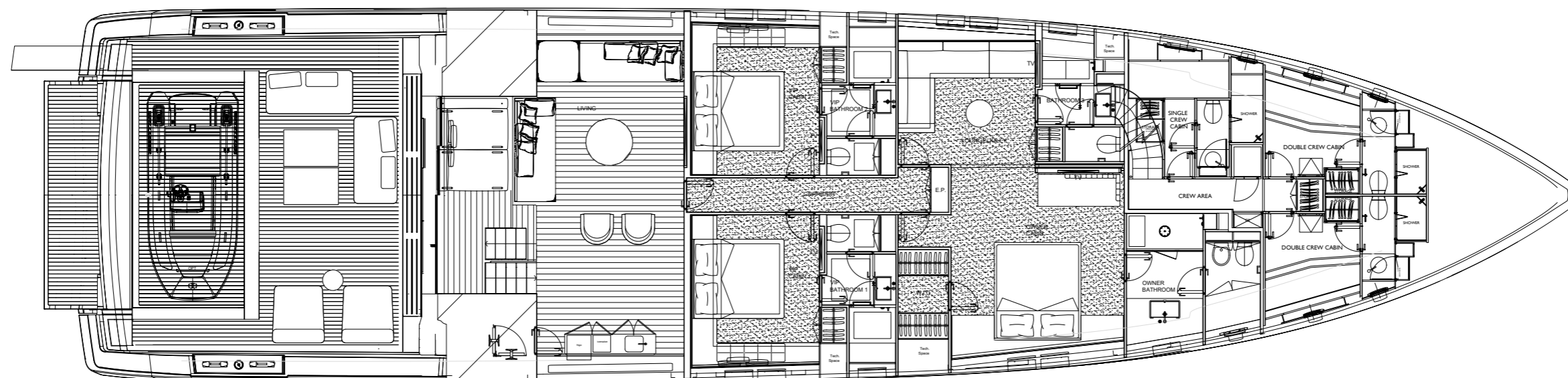




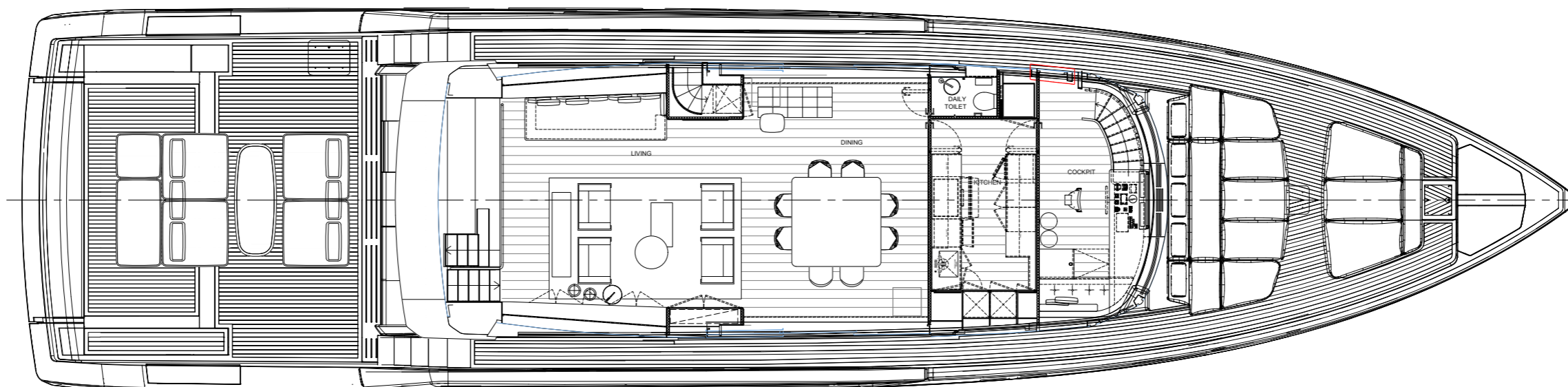
Lower deck



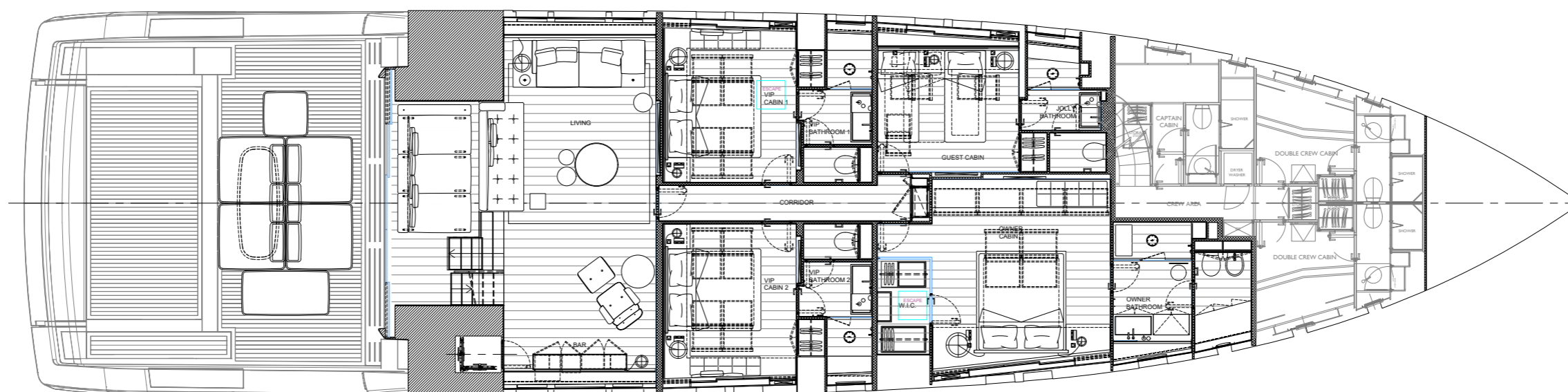
Lower deck – OPT Jolly cabin



Main deck



Lower deck



SP 110/

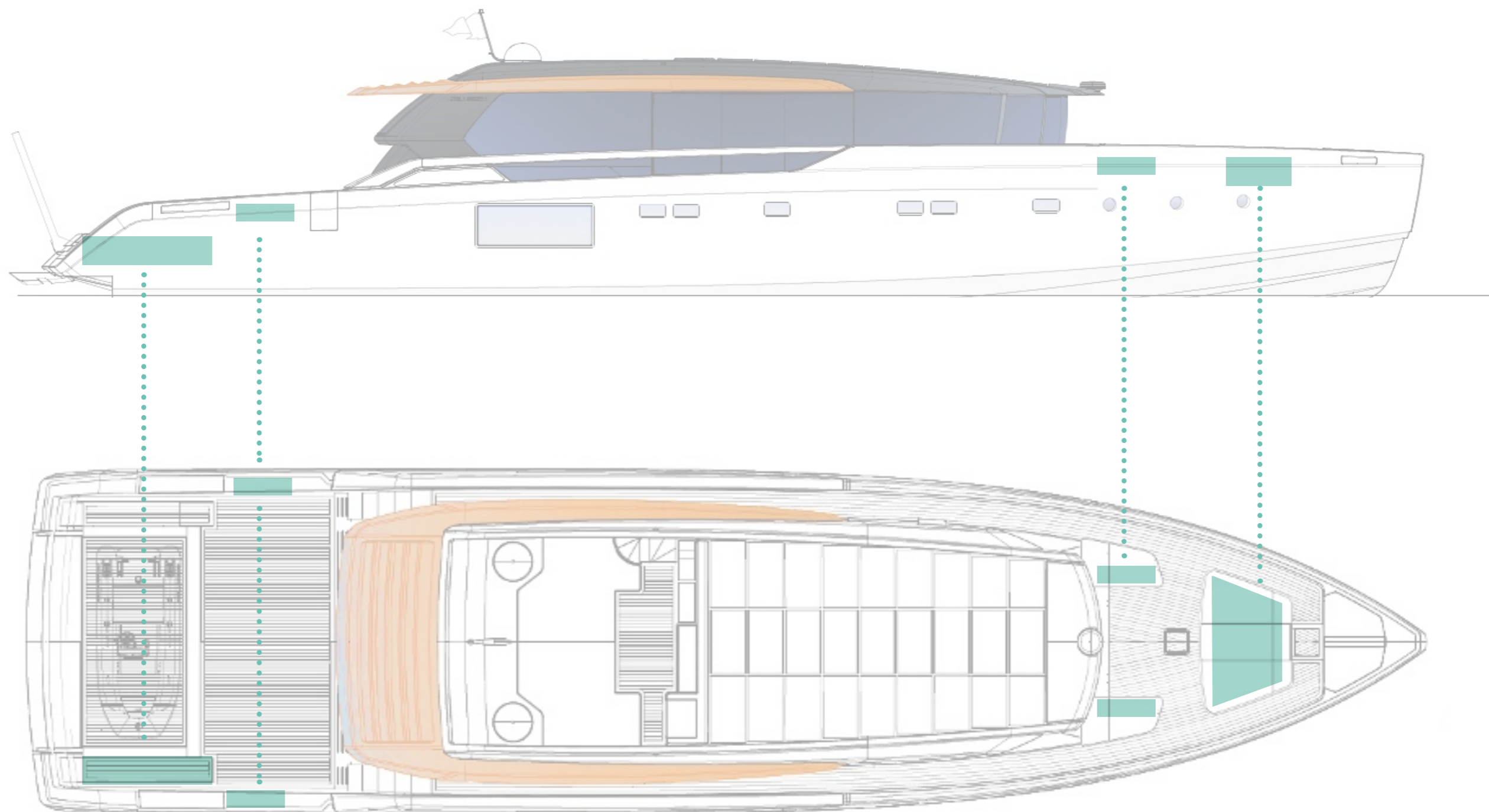
Length overall	33,04 m
Maximum beam	8,2 m
Construction height	3,98 m
Displacement @ half load (*)	105 t
Displacement @ full load (*)	113 t
Waterline length @ half load	29.04 m
Waterline length @ full load	29.05 m
Draught @ half load	1.25 m
Draught @ full load	1,30 m
Guest accommodation	6/8 people
Crew accommodation	5 people
Engine	3 x MAN V12 – 2000 HP
Consumption (approx.) (**)	3 x 400 l/h @ 2300 rpm
Power output @ 100% MCR (approx.) (**)	1471 kW @ 2300 rpm
Gearbox	ZF R=1,800 : 1 (TBC)
Transmission	3 x MPJ Water Jet type CSU 550 (central unit as booster)
Propeller	-
Shafts	-
Gensets	1 x 28 kW + 1 x 35 kW
Rudders	-
Maximum speed (approx.) (***)	40 kn
Cruising speed (approx.) (***)	36 kn
Economic speed (approx.) (***)	10 kn
Max range @ economic speed (approx.)	900 nm
Deadrise	16,3°
A/C power	210000 btu/h
Fuel capacity	12000 l
Fresh water capacity	1500 l
Black & Grey water capacity	400 l + 600 l
Tender length	max 4,6 m jet tender (in garage)

* Displacement data refers to a yacht with standard layout as described in the sales specification

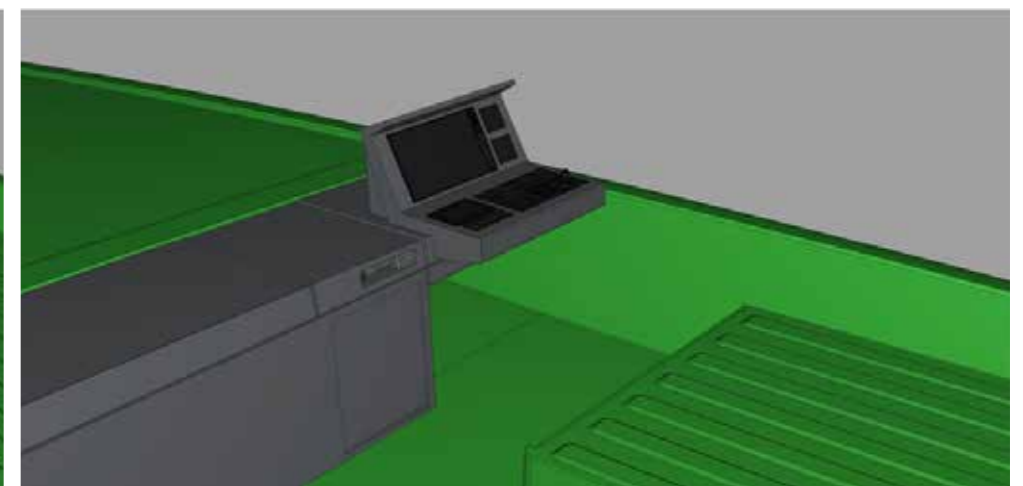
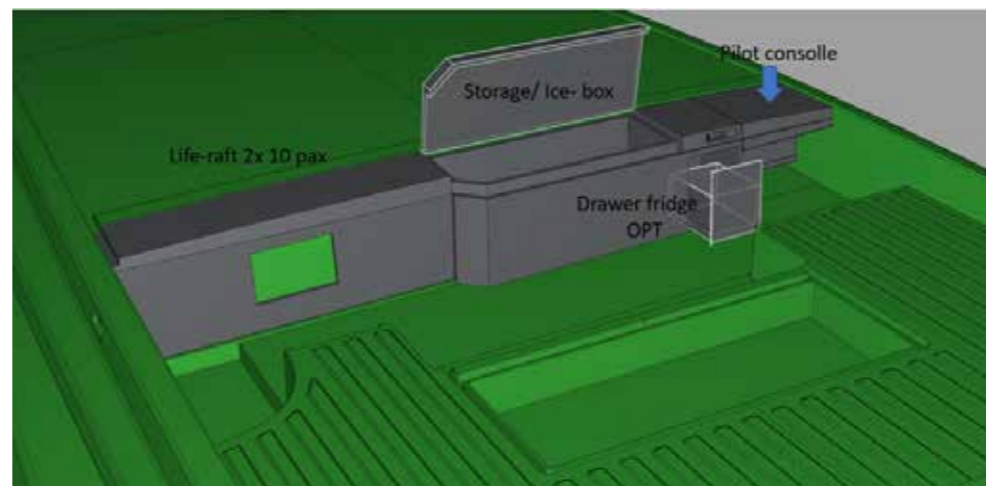
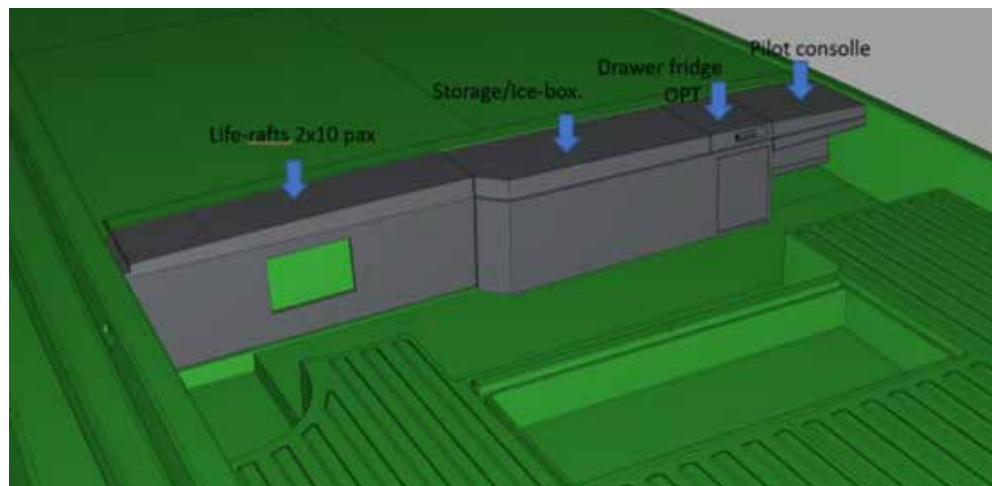
** Main engine performance data and characteristics are derived from the manufacturer's specification

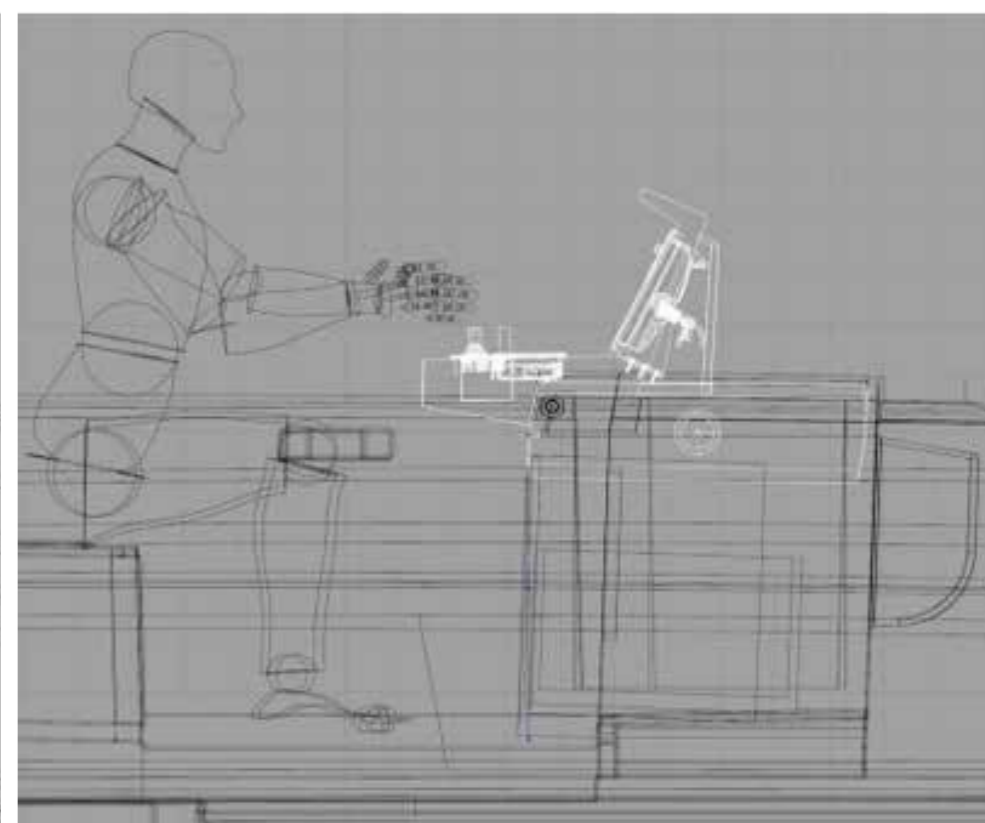
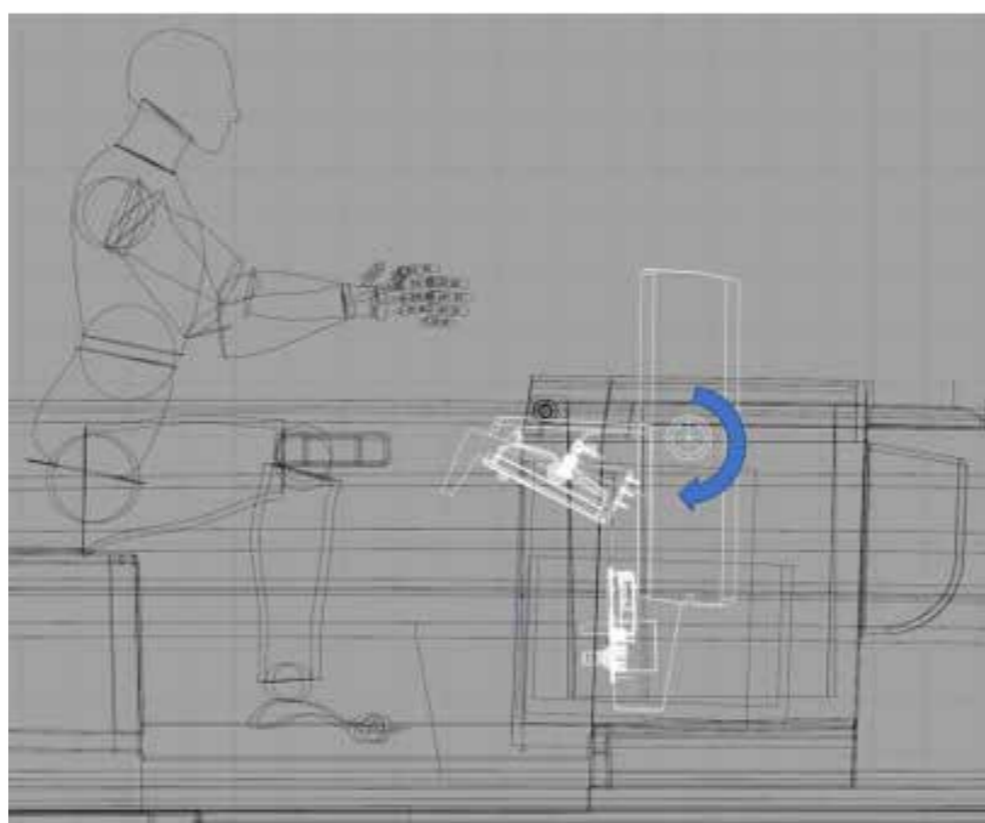
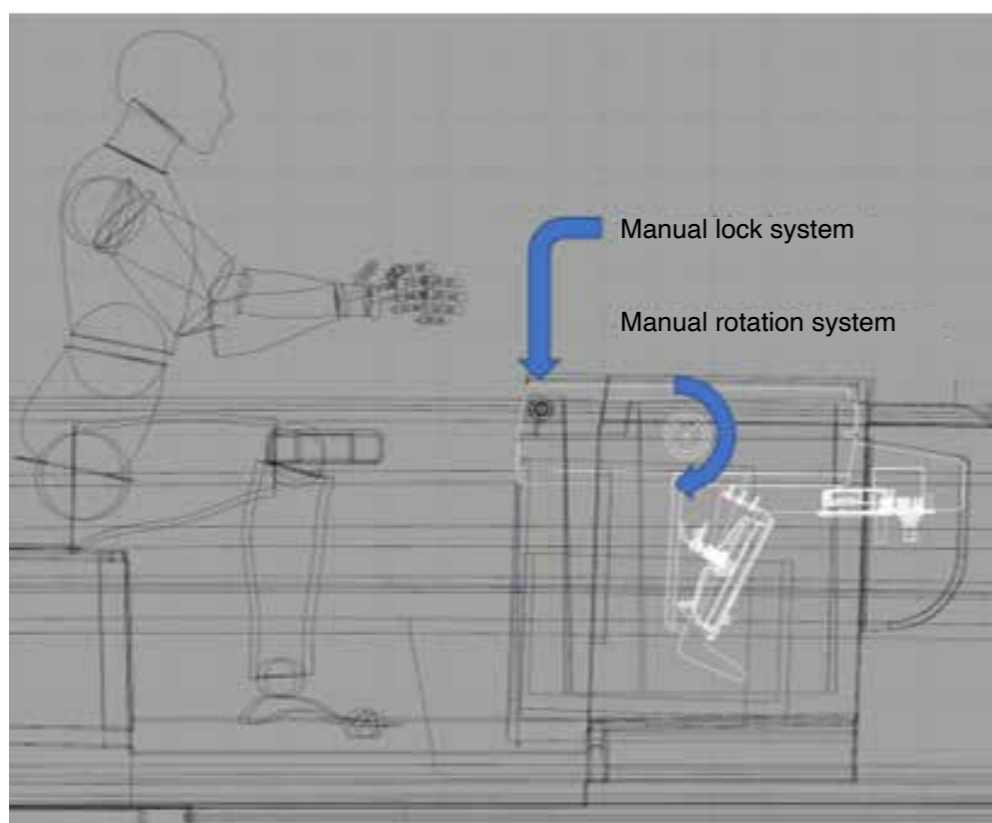
*** Speed data refer to a yacht with standard layout as described in the sales specification, considering a half of liquid weight, a half of luggage weight (25kg per bed) and 5 crew members (80kg each), and without hardtop.

technical features





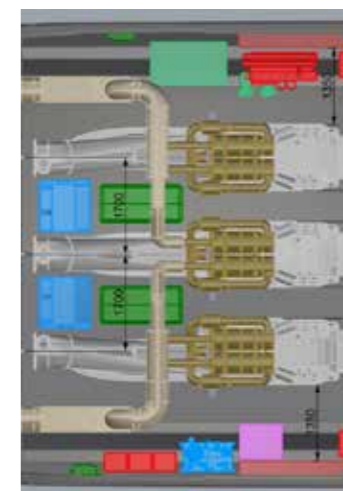
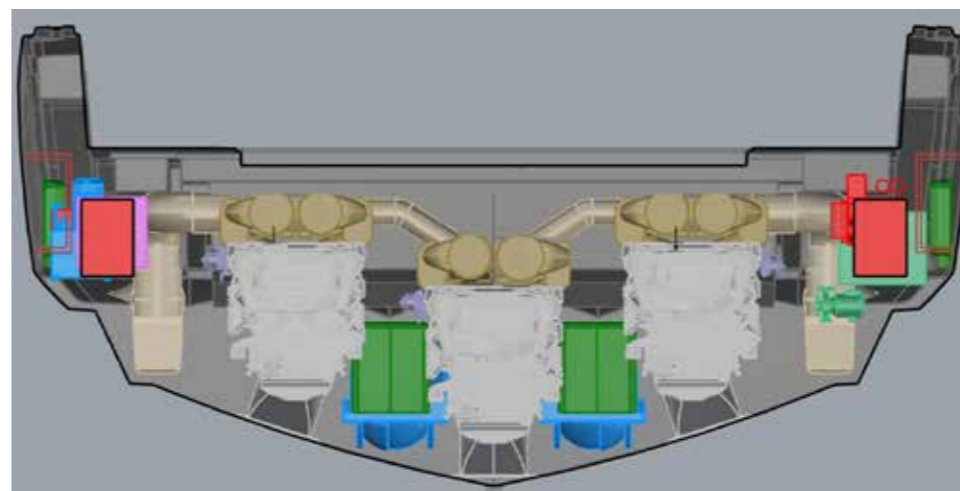
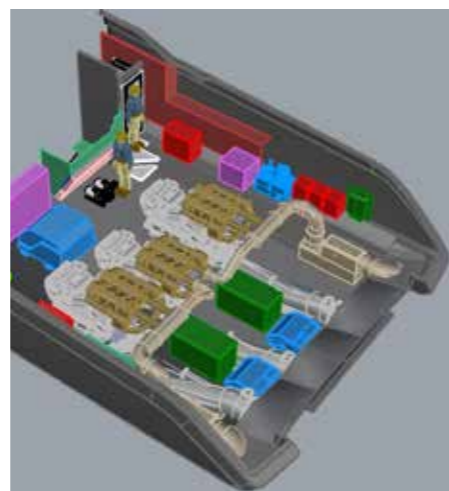






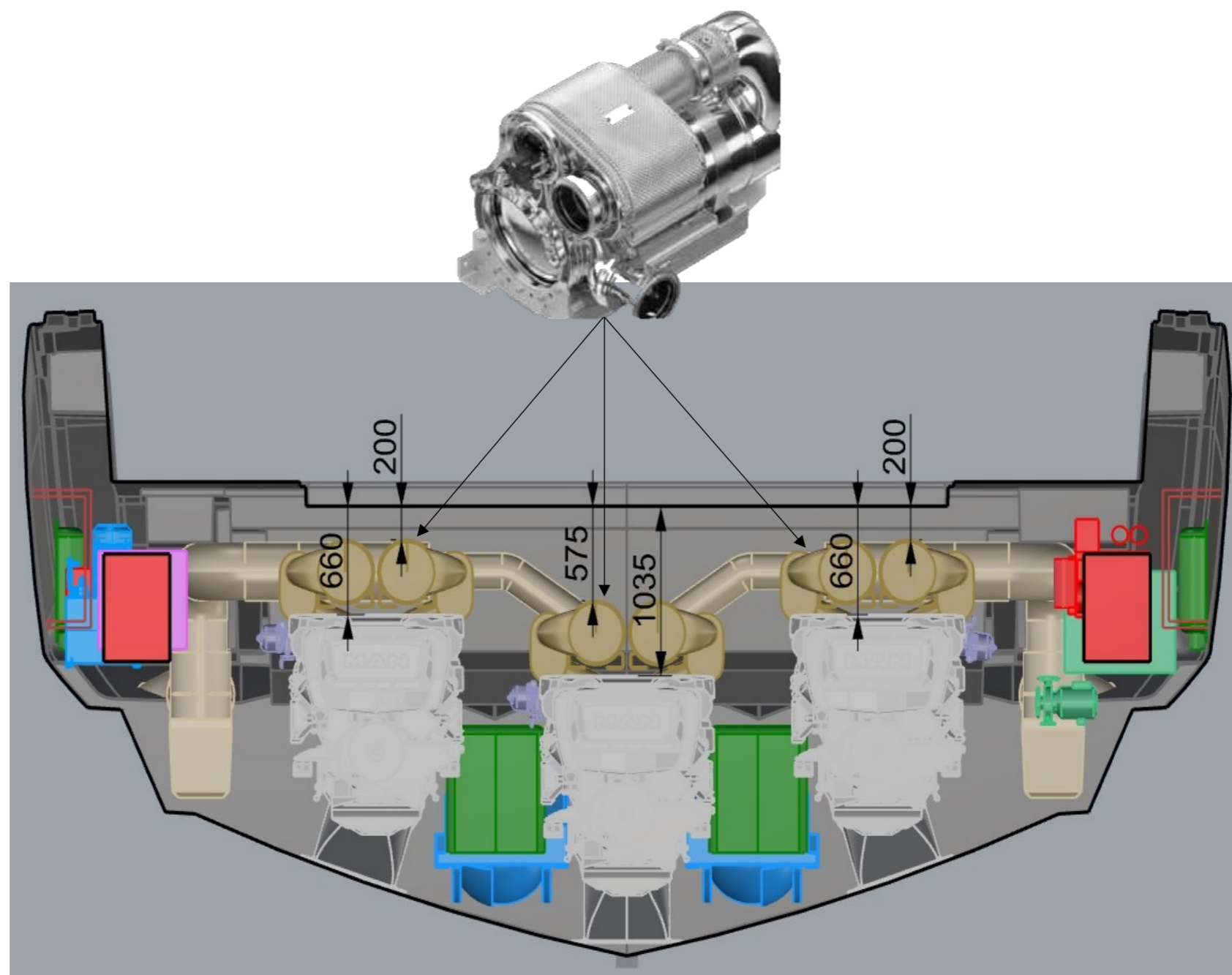


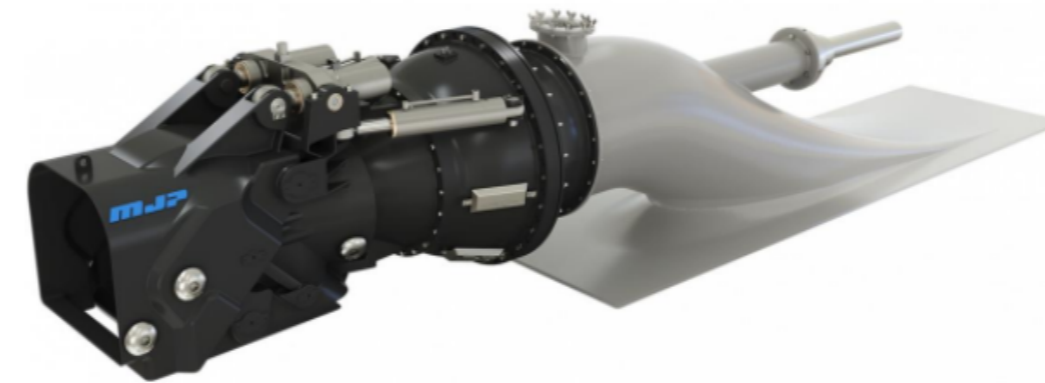
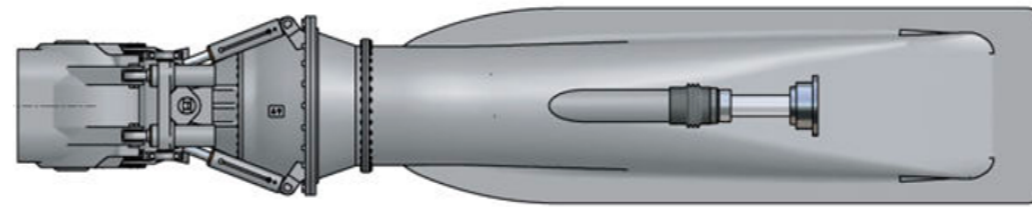
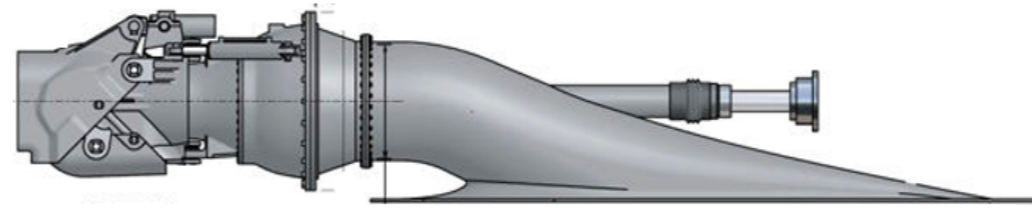
with Selective Catalytic Reduction (SCR) of NOx for powerful environmental and cost benefits





with Selective Catalytic Reduction (SCR) of NOx for powerful environmental and cost benefits

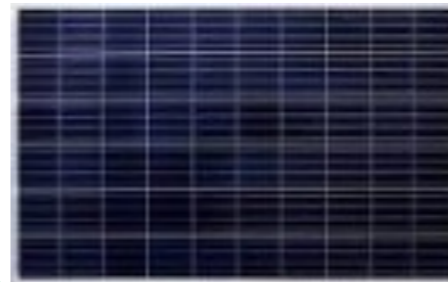




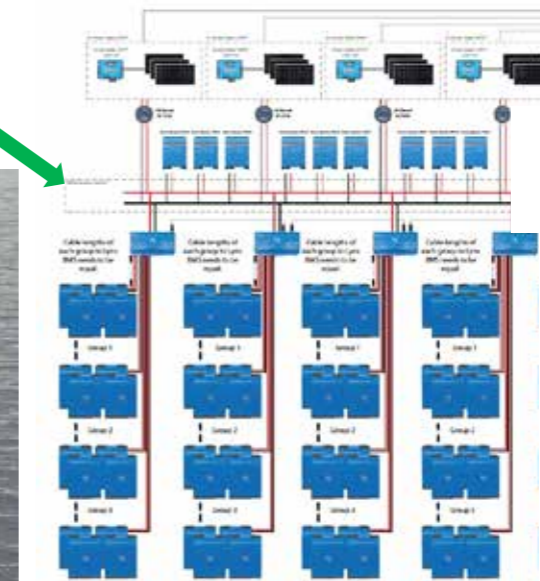
A FORCE TO TRUST

CSU series 550

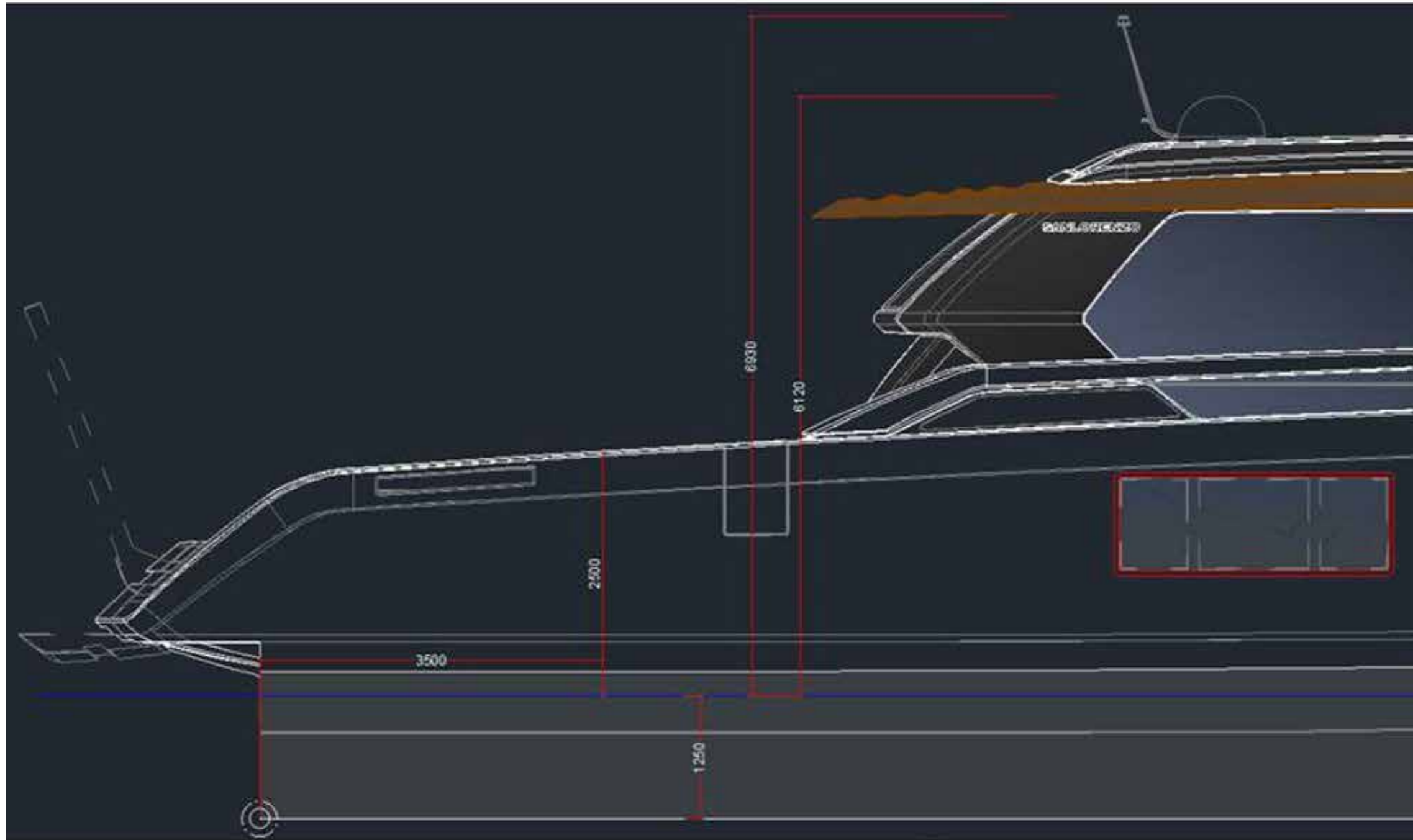
Monocrystalline
solar panels

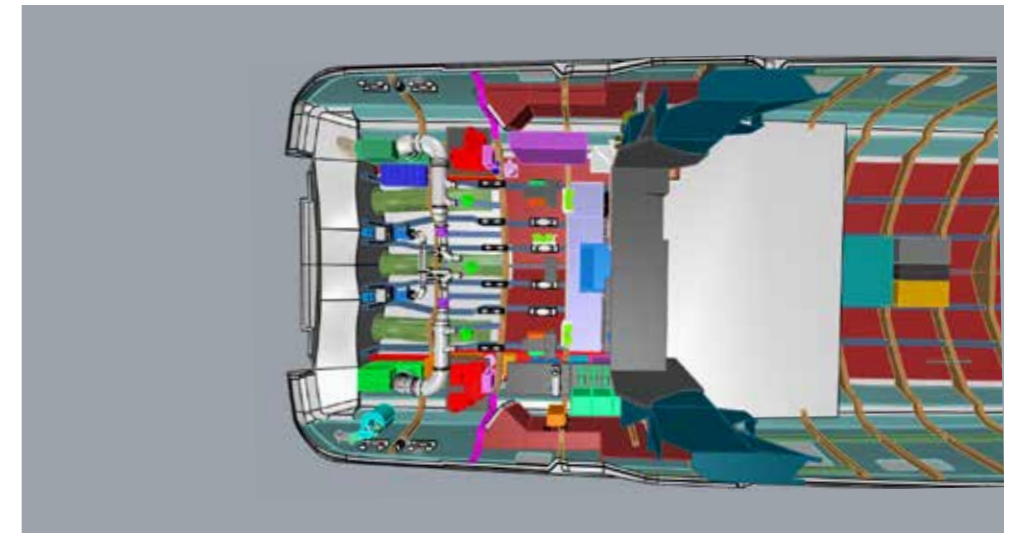
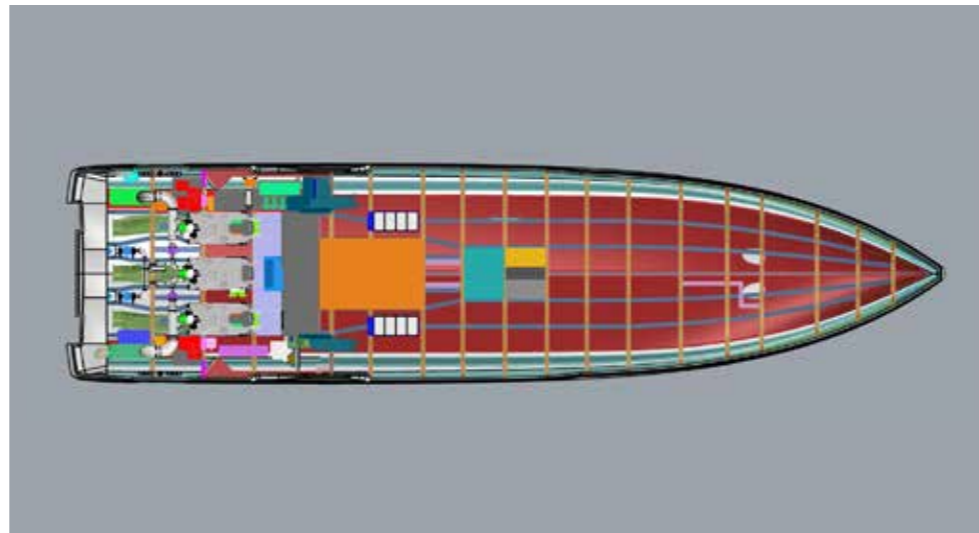
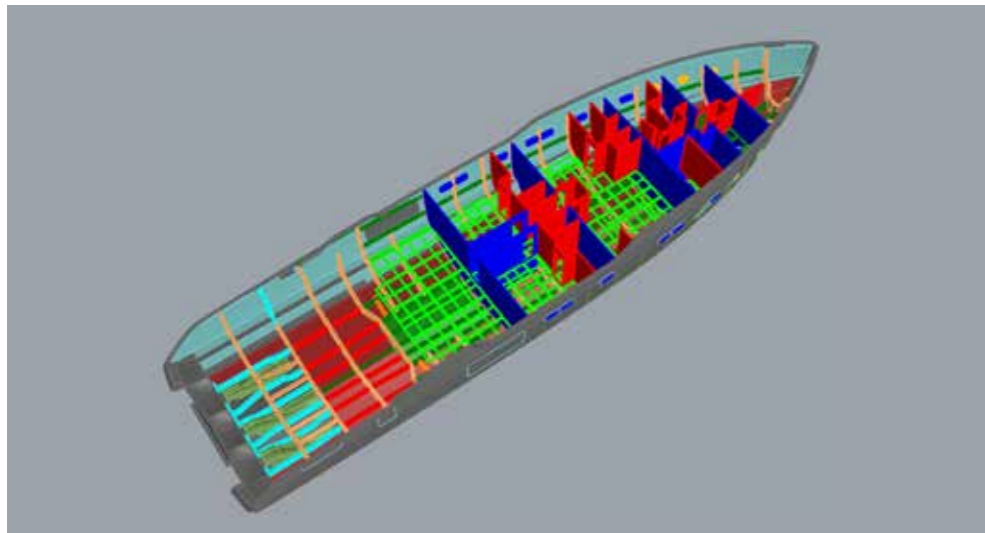
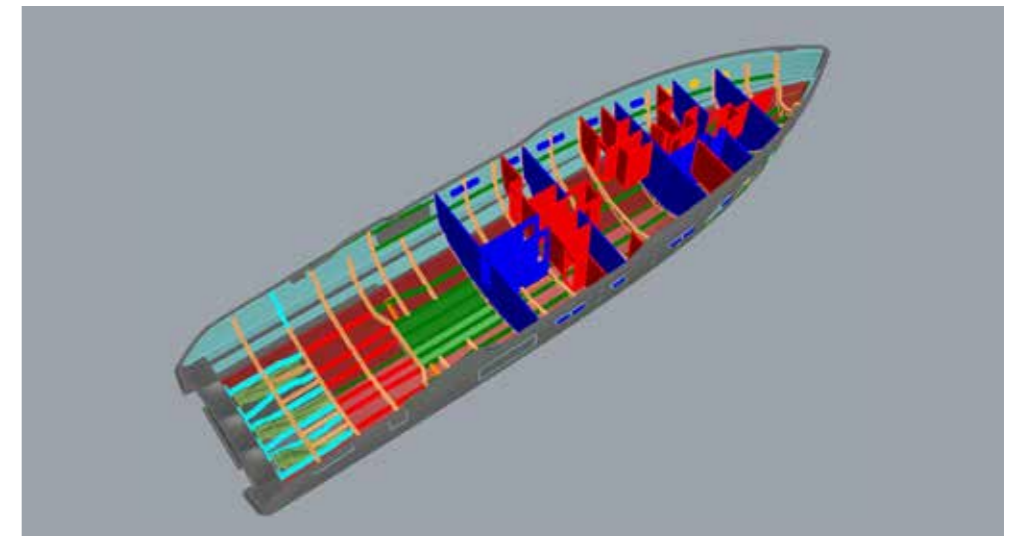
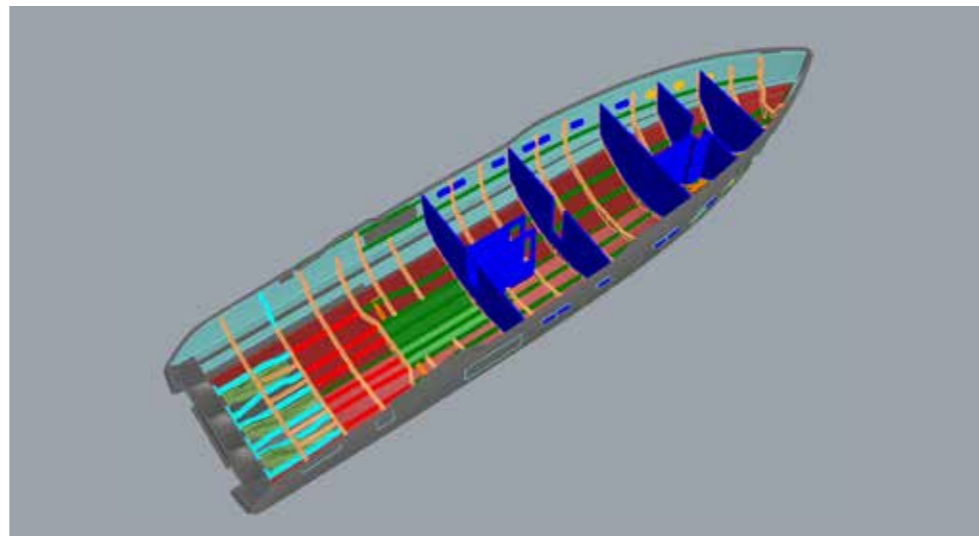
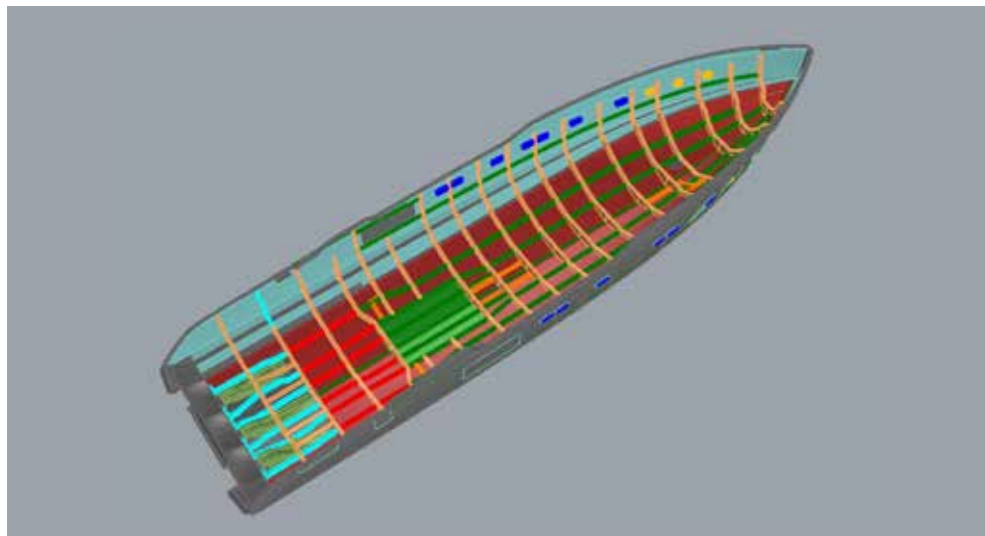


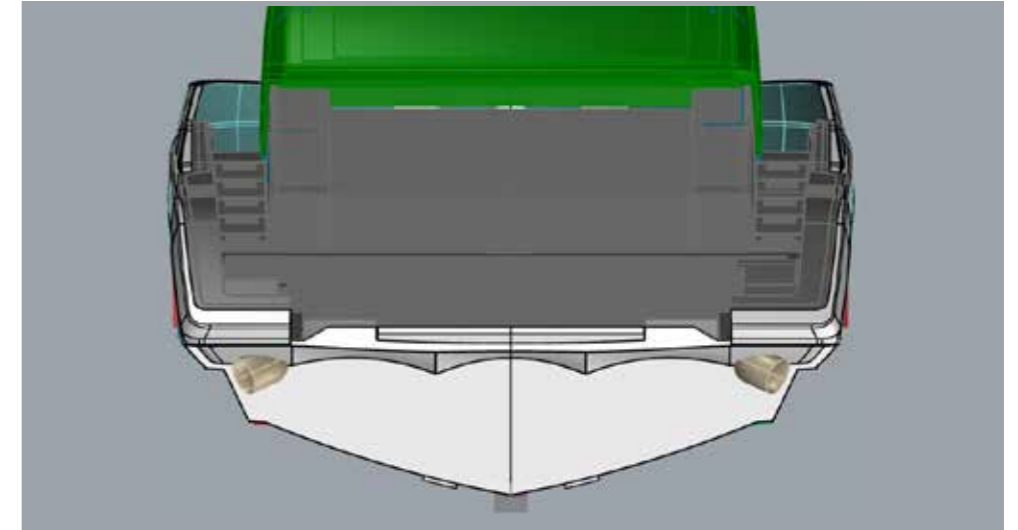
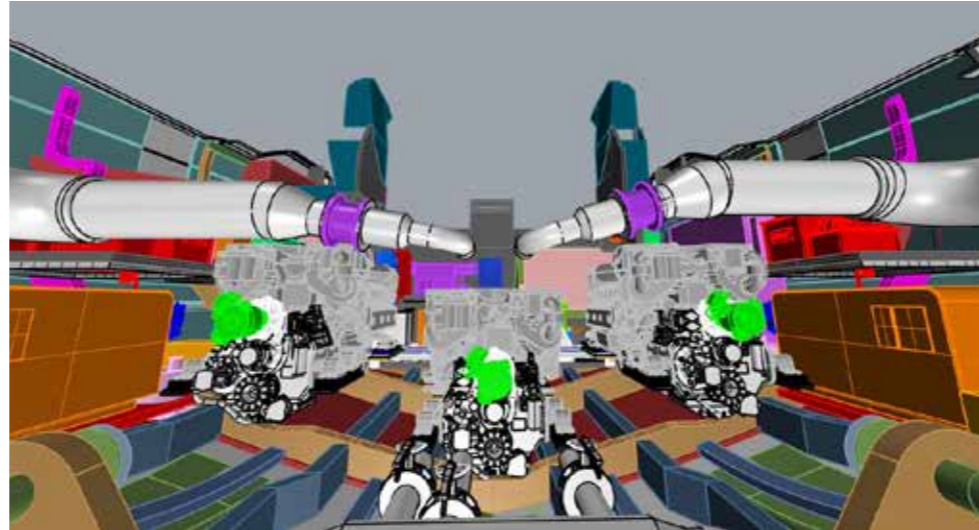
Battery bank

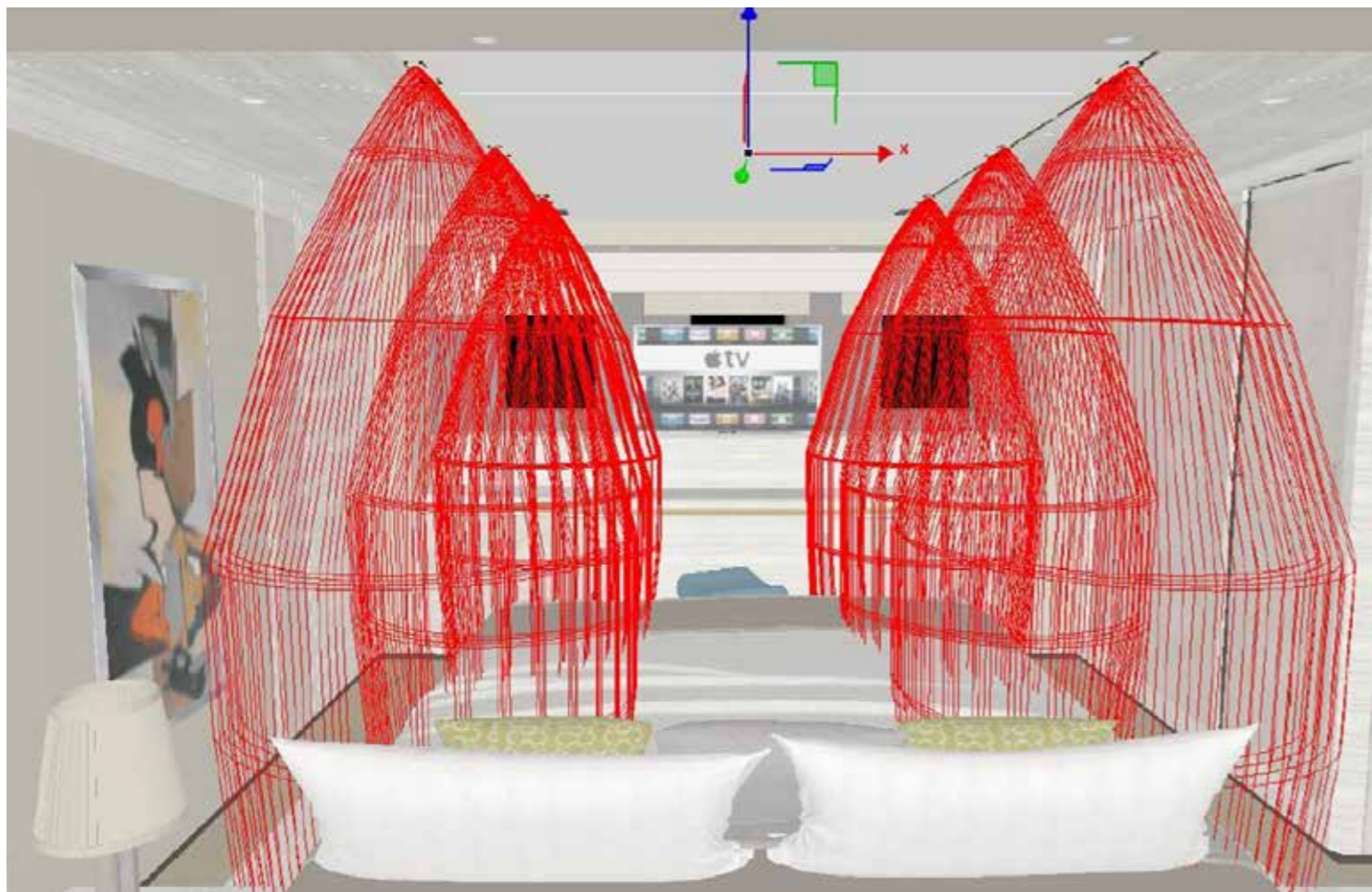


In the Mediterranean waters, in a summer day, about 62 kW will be produced to run the hotel loads (average 15 kW/h) for more than 4 hours **for free, everyday**

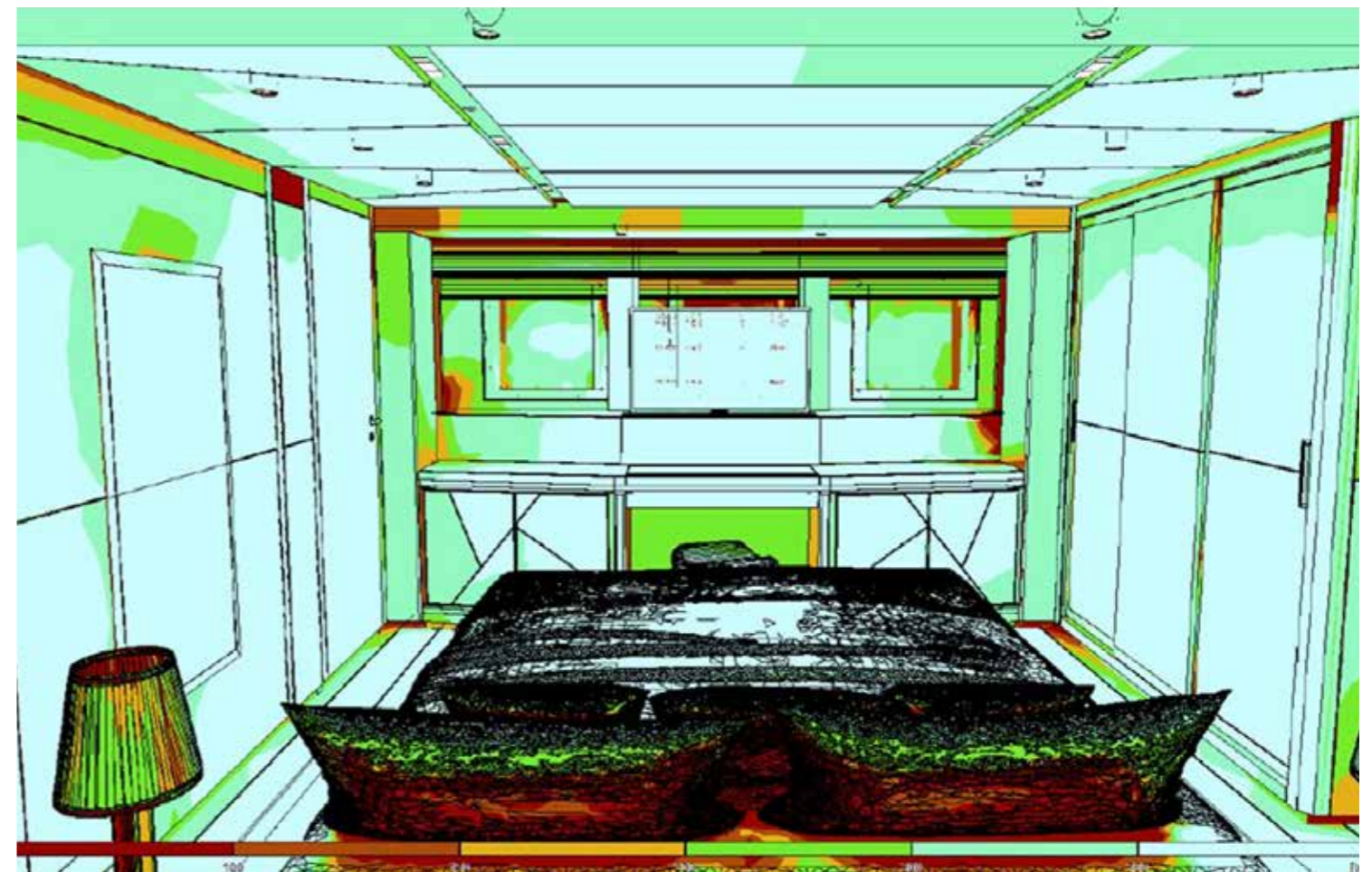








Fotometric curves check



Check for best light distribution

This brochure shall not be regarded as a contractual offer regarding the sale of yachts from the shipyard to individuals or companies. All the information contained in this brochure, including without limitation any technical or performance data, pictures, and drawings, are mere indications with no contractual value.

This document is based on the information available at the time it is published. In spite of the commitment aimed at guaranteeing maximum possible accuracy, the information contained herein may not cover all the details and any technical-commercial modifications introduced after printing, or may describe features that are not present.