



2022 Sanlorenzo SL 86

M/Y NEVA I

€ 5.850,000
(TC Flag - EUVAT Not Paid)

SANLORENZO

TRIO
YACHTING YOUR LIFE

Costruttore/Builder
Modello/Model
Anno di Costruzione/Year Build
Lunghezza fuori tutto/Length overall
Larghezza/Beam
Visibile a/Lying in
Bandiera/Flag
Materiale scafo/Hull material
Motori/Engines
Potenza motori/Engines power
Ore Motori/Engine Hours
Velocità Massima/ Max Speed
Velocità di Crociera / Cruise Speed
Generatori/Generators
Ore generatori/Generators hours
Prezzo/Price

SANLORENZO
SL 86
2022
26.8 m
6.35 m
istanbul / TR
TC
GRP
M.T.U
2 x 1947 HP
460 hrs
32 kn
27 kn
2 X 27 kW Onan
1745
5.850.000 Euro



<https://www.youtube.com/watch?v=psbx1ALQitA&t=2s>

TRIO
YACHTING YOUR LIFE



















































































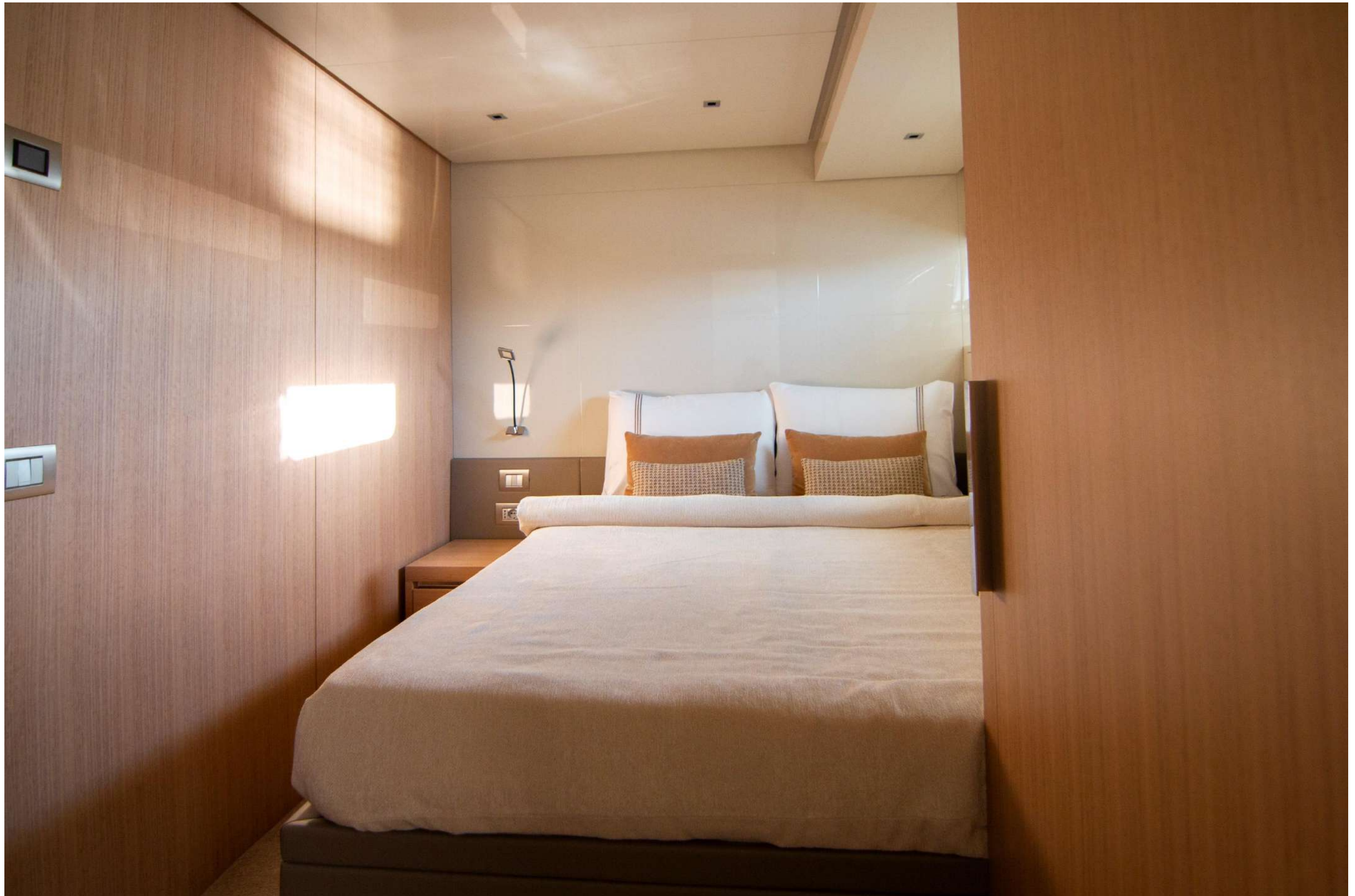


















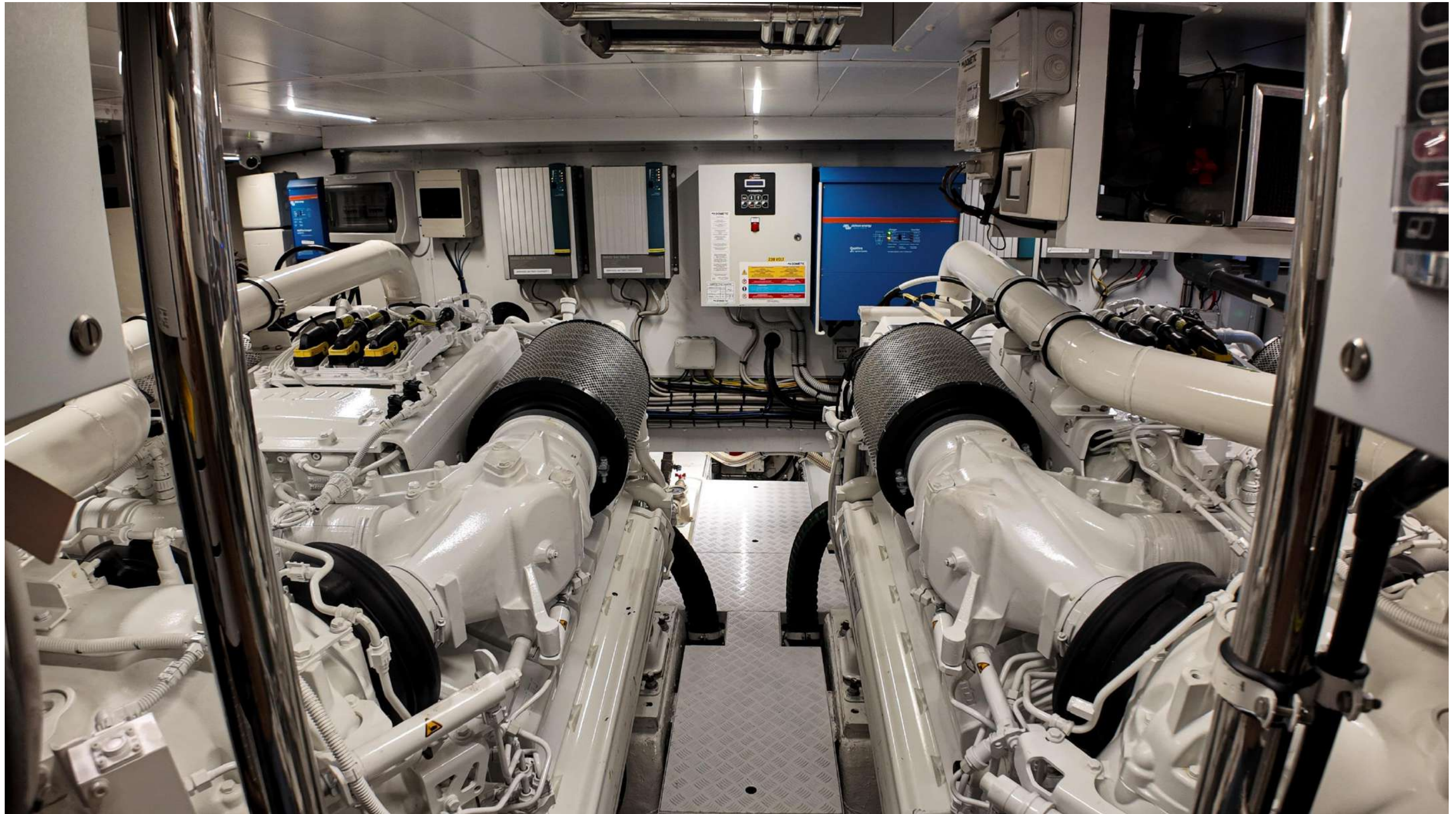








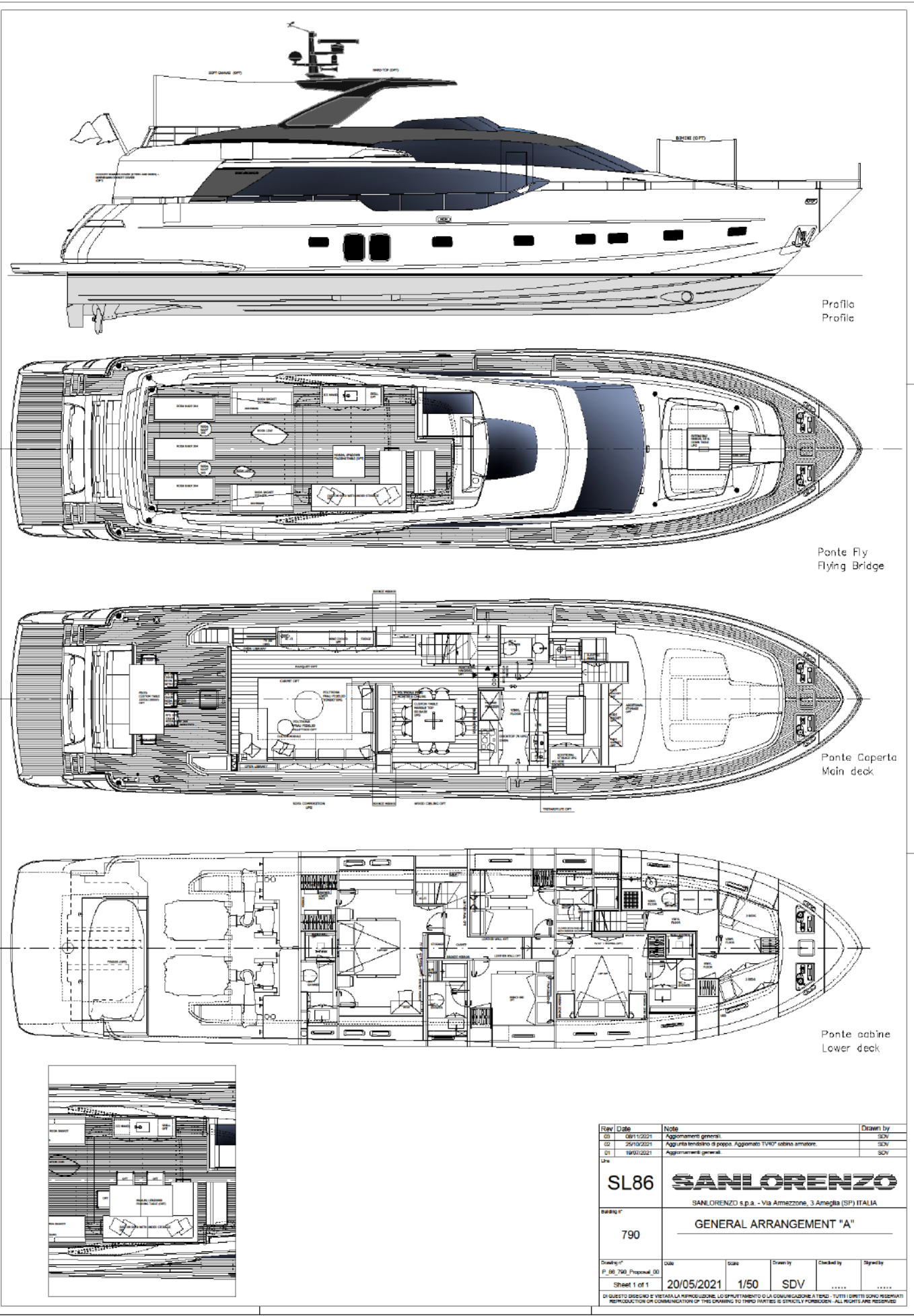












Rev.	Date	Notes	Drawn by
01	08/11/2021	Aggiornamenti generali.	SDV
02	25/02/2021	Aggiunta tendine ai poppi. Aggiornato TORP cabina armatore.	SDV
03	18/07/2021	Aggiornamenti generali.	SDV

Use

SL86

SANLORENZO
SANLORENZO s.p.a. - Via Armazone, 3 Ameglia (SP) ITALIA

Scale

790

GENERAL ARRANGEMENT "A"

Drawn by	Scale	Drawn by	Checked by	Signate
P_98_790_Proposal_00	1/50	SDV

Sheet 1 of 1

20/05/2021

DI QUESTO DISEGNO È VIETATA LA REPRODUZIONE, LO SPUNTAMENTO O LA COMUNICAZIONE A TERZI. TUTTI I DIRITTI SONO RISERVATI.
REPRODUCTION OR COMMUNICATION OF THIS DRAWING TO THIRD PARTIES IS STRICTLY FORBIDDEN. ALL RIGHTS ARE RESERVED.

Option List

1	Additional battery charger 12V 25A for generator batteries
2	Inverter Mastervolt 24V 5000W - for sockets 220V
3	Additional 220V waterproof socket in flybridge bar
4	CCTV IP Raymarine (no dvr): 2 fixed in the cockpit, 2 fixed in engine room
5	Additional fixed control station MTU in aft cockpit
6	Foot switch for capstan with reverse option
7	Additional chain lenght (n°1 lenght of 27,5m) - n.4 in total
8	Hydraulic stern thruster
9	Fins stabilizer system ZERO SPEED (underway and at anchor)
10	Raymarine Diamond package (diff from Silver std configuration)
11	Boiler 150 liters - diff from 100 liters std
12	Upgrade second generator 28 kW (diff.from std 20,5 kW)
13	Additional soundproofing fin stabilizers case
14	Additional insulation between Owner cabin and Engine room
15	Additional service batteries 400A with upgrade of electrical system
16	Hard top with electric blades opening roof
17	Teak floor for flybridge
18	Teak floor on bow area
19	Searchlight with control in the wheelhouse and on flybridge
20	Norwegian cockpit cover
21	Sun awning for the stern area of the fly
22	Norwegian fly canvas (only with hard top)
23	Cockpit summer cover (full closure)
24	Sun awning for bow area
25	Mosquito net for oval/rectangular porthole (n.11)
26	Mosquito for big Sanlorenzo porthole (n.2)
27	Modem Internet Wi-fi 4G cables predisposition only
28	TV led Samsung 55" - diff from 40" std in salon
29	TV led Samsung 40" - diff from 32" std in owner's cabin
30	Additional touch screen monitor 12" (Ship monitoring system)
31	Wine cooler Gaggenau/Miele 20 bottles in salon
32	Grill Barazza on flybridge
33	Cooking top in ceramic glass Gaggenau/Miele 75cm - diff from 60cm std

Option List

34	A/C derivation from wheelhouse to technical storage forward stdb side
35	Eucalyptus wood for interiors and cabins
36	Parquet wood flooring (diff. from standard) in salon
37	Ceiling in dining area in parquet Cadorn (diff. From standard lacquered)
38	Bronze Mirror that hides TV (Owner & VIP)
39	Bed frame opening system with pistons (bed storage) in vip and owner
40	Additional storage in pilothouse in bow area with n. 3 hide sockets
41	Additional storage in dinette main deck with hide socket
42	French bed for one guest cabin
43	Foyer walls on lower deck in Nuvola leather (diff. from standard)
44	Beds and headboards upholstery in Nuvola 207 Camoscio in guests cabins, Vip's cabin and Owner's cabin - diff. From standard
45	Frame in polished chrome in every cabin and salon as frame for cabinets and bedside tables - except crew
46	Frame of beds (except crew) in polished chrome
47	Integrated marble sinks in Emperador light polished finishing in Vip & Owner's bathroom - diff. From standard
48	All toilets (incl. crew) w/ integrated bidet (cancel standart bidets)
49	standard
50	Rain shower (VIP)
51	"U" shape Minotti Andersen Slim sofas in Minotti Douglas 02 sabbia: N° 1 "L" shape sofa and N° 1 chaise longue - diff. From standard
52	No. 1 Poltrona Frau Fidelio smoke round table with Glossy Calacatta Oro marble top, structure in wenge stained ash (diam. 90cm, h. 30 cm),no. 1 Poltrona Frau Fidelio smoke elliptical table with Poltrona Frau Saddle Tortora leather top, structure in wenge stained ash (45x35cm, h. 55 cm) - (diff. from standard)
53	Custom dining table 20 mm radius with Coffee brown polished finishing marble top and central base with N° 2 rectangular cage profiles crossed in polished chrome. 130 x 130 - diff. From standard
54	N° 8 Poltrona Frau Montera dining chairs without armrest, all covered in Poltrona Frau SC33 Travertino leather, with ashwood stained wenge structure - diff. From standard
55	Santushti Wheat carpet in salon
56	area)
57	No. 2 Roda Root 045 coffee tables with moonstone top and teak base

Option List

58	No. 1 Roda Leaf 001 + N. 1 Roda Leaf 002 coffee tables with ivory gres top and smoke structure on flybridge (diff. From standard)
59	No 3 Roda Orson folding chairs on flybridge in teak and grey batiline
60	Bar furniture in Corian top and sides and doors in slatted varnished teak on flybridge (diff. from standard)
61	Custom L-shape sofa for flybridge with varnished teak structure and storage inside (diff. From standard n. 8 chairs)
62	Table with manual hi/low system in fly with top in varnished teak (diff. From standard)
63	Additional n.3 dining chairs for aft cockpit Roda Harp 349 in smoke structure and grey rope and W23 sand cushion
64	Fixed dining table in the cockpit in varnished teak top and stainlee steel base (diff. From standard)
65	Upgrade capacity of black tank (+ 20% aprox) and grey tank (+ 35% aprox)
67	Bronze mirror on the wall behind the bed in Owner's cabin
68	USB high capacity recharge for all cabins bed side tables
69	Table in cockpit fixed dim. 220 cm x 110 cm (diff. From 190 x 100 cm)
70	Upgrade anchor chains diameter from 12mm to 14mm. Windlass upgrade to 3500W model
71	Upgrade 2 x generator ONAN 27kW (diff. From 2x KOHLER 28kW)
72	Alessi supply for cutlery furniture
73	N° 1 additonal Roda Orson folding chairson flybridge inteak and grey batyline
74	Tender WILLIAMS Sportjet 435 - 135 HP
75	N.4 underwater lights CAPTAIN WATER PROOF
76	Predisposition cables for SAT Antenna
77	SAT TV antenna DOTOGO 60cm + empty radome (Installation in Turkey)
78	Watermaker SEAMAR 350 lt/h (Installation in Turkey)



FOR FURTHER INFO

Mr. Anil Aycan

+90-541 562 89 08 | anil.aycan@triodeniz.com

The decorative items shown in the brochure, as artworks, ornaments, towels, linens and bed covers were on board for the photo shooting only and they are not part of the offer.