

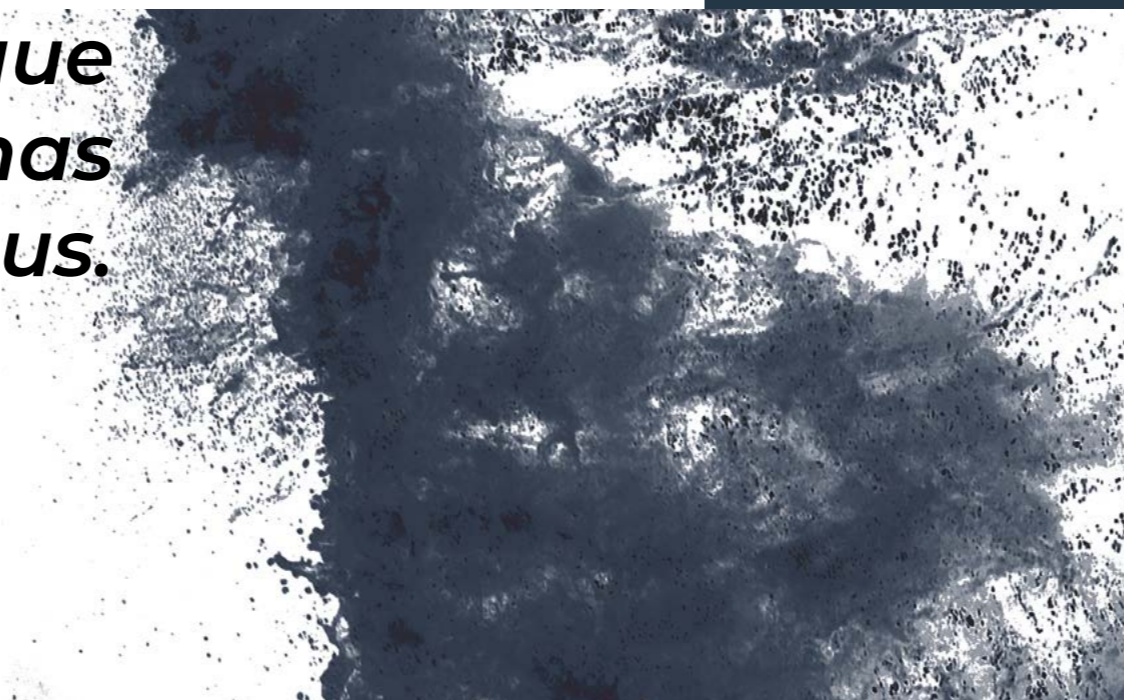


DRIVE THE SEA.

Strider

75

*Each model comes from a thought, from a pencil that flows on a sheet and comes to life thanks to the passion for unique and brilliant design that has always distinguished us.*



**Made in Italy**  
**since 1989**



Sacs excellence shapes your thoughts.  
Each Sacs is a unique masterpiece, created following the wishes and needs of the Customers.

The most advanced technologies in the sector combined with the italian craftsmanship strengthened by passion and thirty years of experience, make the most of each boat, ensuring excellent performance, in total safety.

# Models



## Rebel



A new nautical concept to experience the sea: Rebel has re-written the rules. BORN TO REBEL.

## Strider



Performance, design and comfort, combined with a surprising personality. However you want to experience the sea, there is the perfect rib for you. NO LIMITS TO YOUR DREAM.

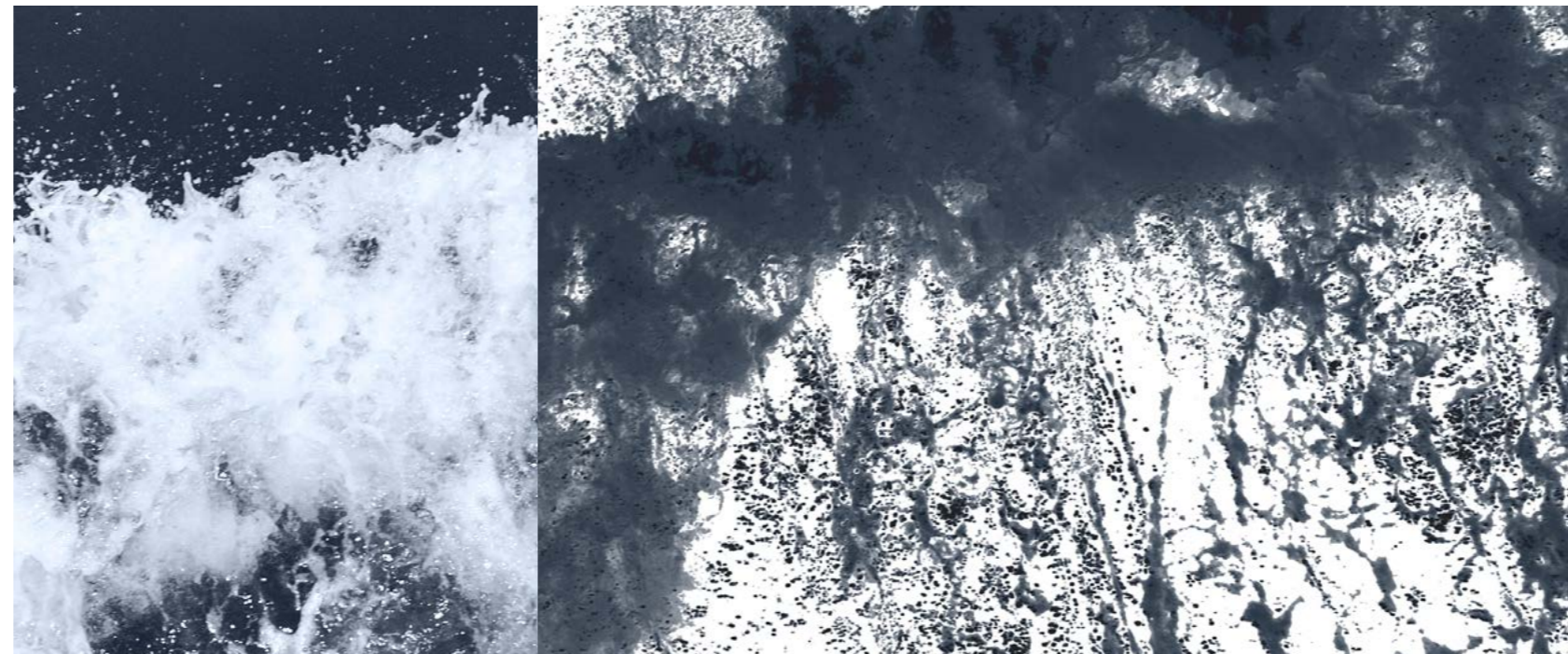
# Strider 15





# **Strider 15**

Fast, innovative,  
stylish



A strong character that take shapes with style, energy, and power. All the sinuous lines of the boat converge on the big “beach area” at stern and at bow to create two precious and functional spaces.

**992kw**

Maximum installable  
power

**42kn**

Maximum Speed

**16**

Persons capacity

\*The values refer to the tests performed in optimal weather conditions with the boats equipped with the inboard suggested engine.





# Outboard





Master suite stylish details



Stern guest stateroom with comfortable double bed



## All in *details*

Each Sacs boat reflects the style of its Owner, even in the smallest details. A professional team accompanies the Owner in the configuration process and choice of the wide range of fine essences, refined textures and design accessories.



Bathroom area with separate rain shower and toilet



Bow master stateroom with livable spaces, sofa and super queen size bed

Unequivocal Sacs eyes



Elegant dashboard with touchscreens and most innovative technologies



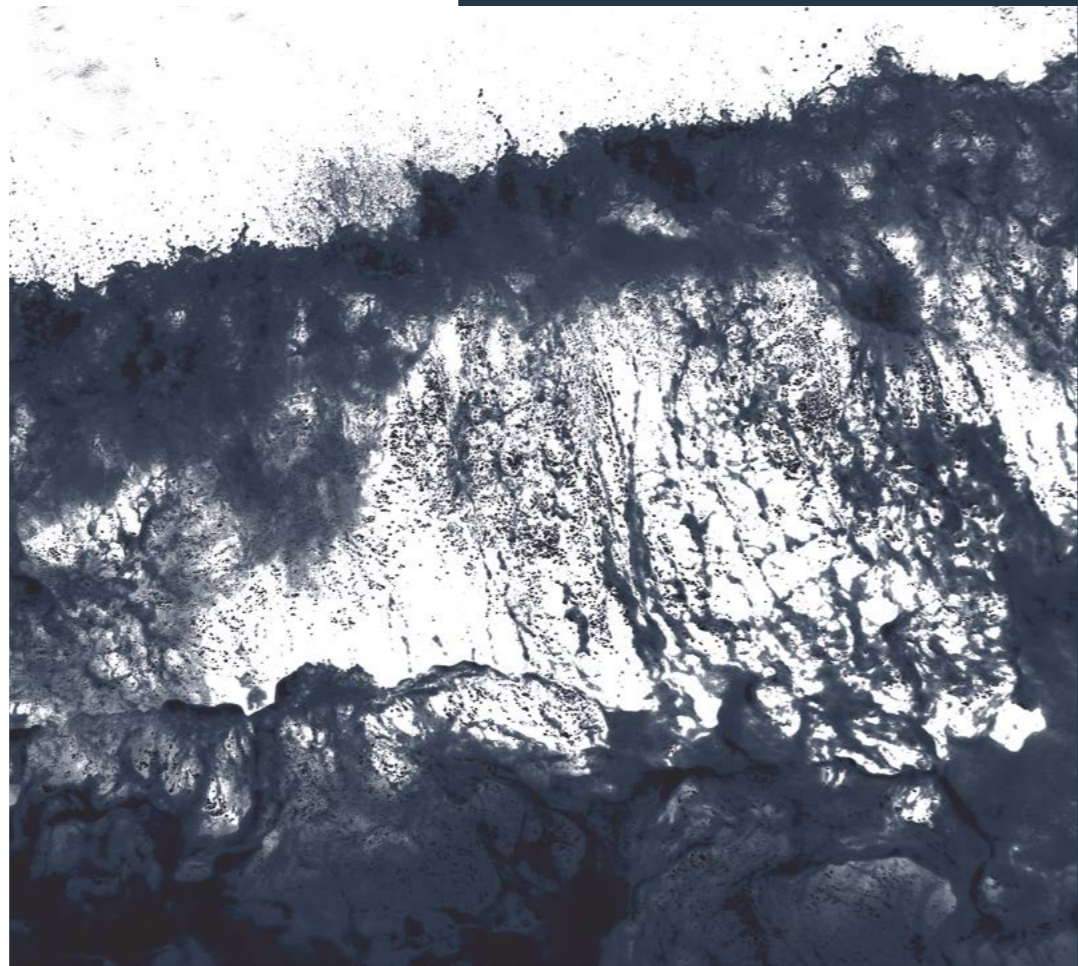
Side  
INBOARDMain deck  
INBOARD

Lower deck

Side  
OUTBOARDMain deck  
OUTBOARD

# Technical specifications: Strider 15

	INBOARD	OUTBOARD
Overall length	15,00 m	
EC certifying length	13,65 m	
Max beam	5,02 m	
Draft (to the prop)	0,80 m (1,10 m)	
Tubes	80 cm	
Number of tubes compartment	11	
Hull type	Deep V Hull	
Dead rise	20,9°	
Dry weight with standard engines	10,5 t	
Fuel tank capacity	1200 lt	2500 lt
Water tank capacity	225 lt	
Waste tank capacity	52 lt	
Homologation category	CE - B	
Persons capacity	16	
Sleeping accommodation	4	
<b>Maximum installable power</b>	<b>650 kW</b>	<b>992 kW</b>
<b>Suggested engine</b>	<b>2 x Volvo D6 440 hp Diesel</b>	<b>2 x Mercury 600 hp</b>
<b>Transmission</b>	<b>Stern Drive</b>	<b>Outboard</b>
<b>Max speed</b>	<b>42 kn</b>	<b>51 kn</b>
<b>Cruise speed</b>	<b>28 - 32 kn</b>	<b>30 - 34 kn</b>
<b>Consumption (speed)</b>	<b>95 L/h (28 kn)</b>	<b>185 L/h (30 kn)</b>
<b>Range at cruising speed</b>	<b>350 NM</b>	<b>400 NM</b>
Design	Christian Grande DesignWorks	
Project	SACS	



The Characteristics of the boats are provided as example only. Furthermore, under any circumstances the above mentioned descriptions shall not represent an element to be used as assessment of conformity of the boats, including matters pursuant to the European directive EC 00/44.

As part of the strategy of constantly updating the technical and styling features of the boat, SACS reserves the right to amend the features of its boat at any time. The Customer must therefore carefully verify the features of the boat with SACS sales force before placing his order.

