

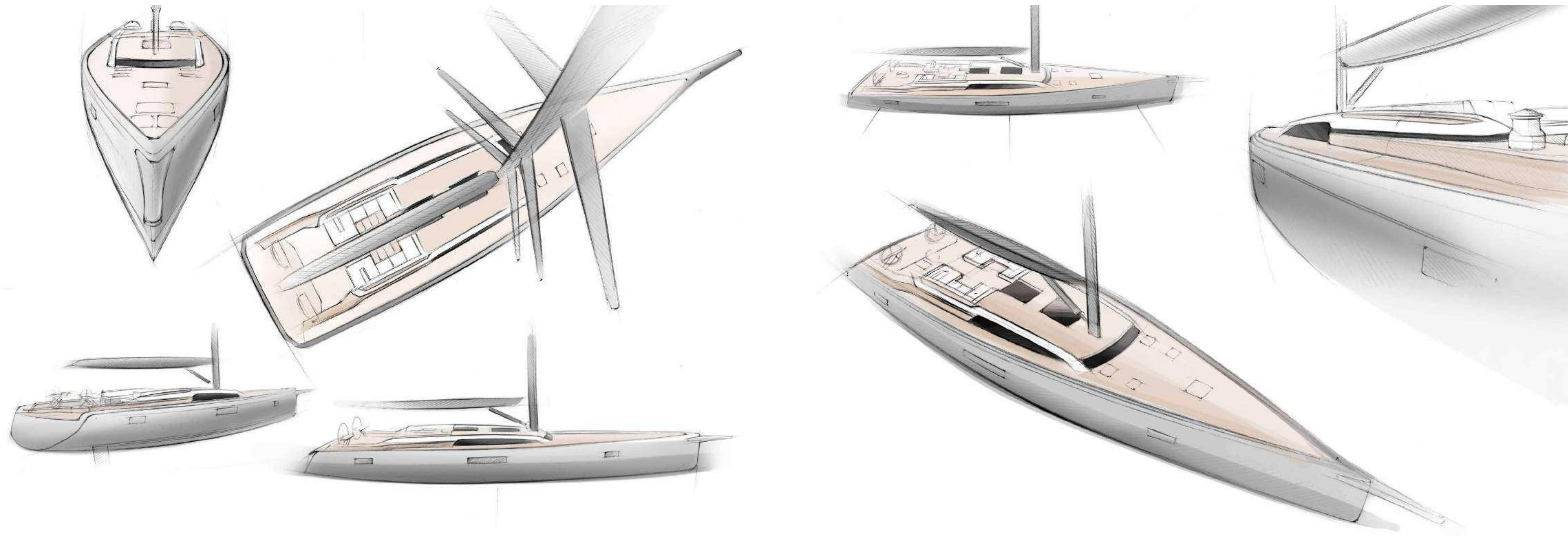
**SWAN80**

The logo for SWAN80 features the text "SWAN80" in a bold, sans-serif font. The word "SWAN" is in blue, and "80" is in dark grey. A horizontal blue line with an arrowhead pointing to the right is positioned directly beneath the text.















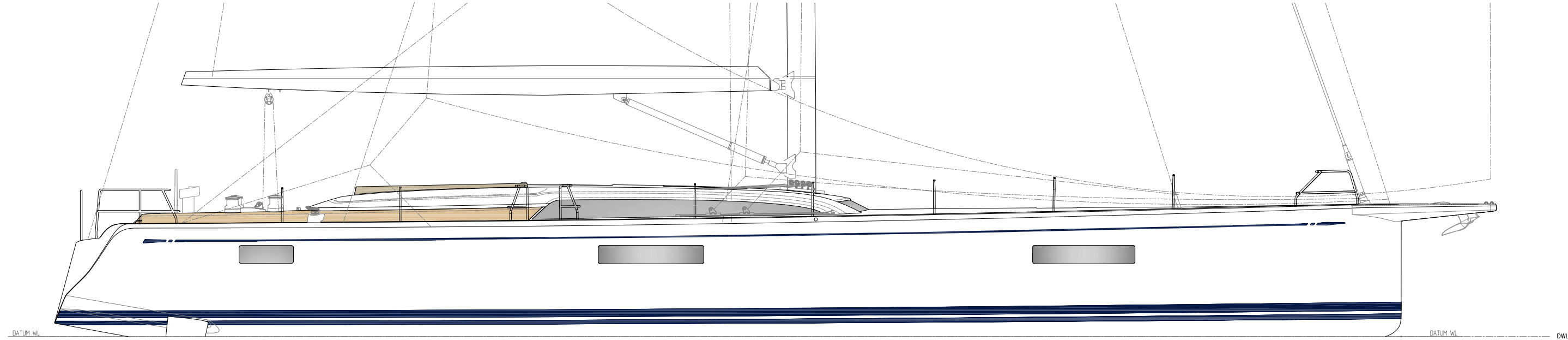




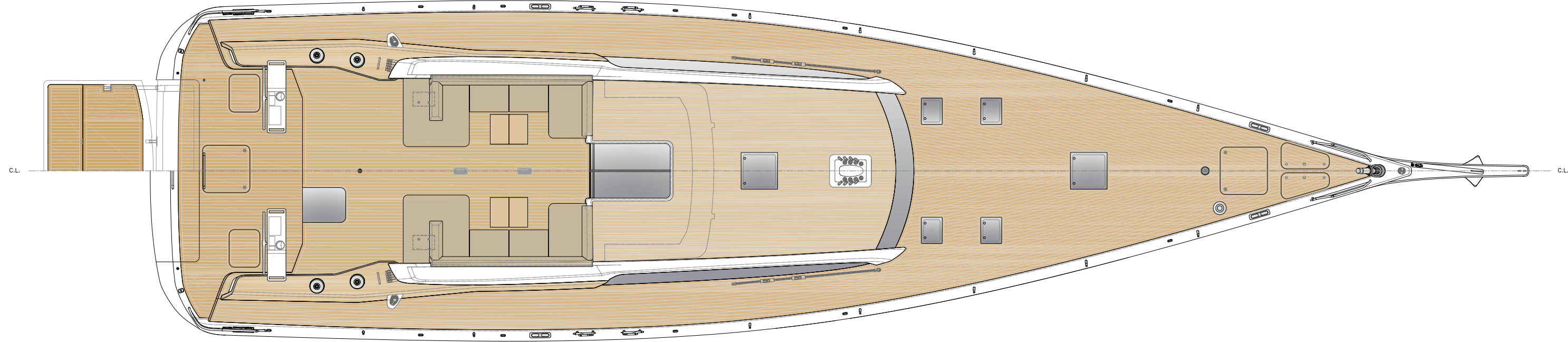
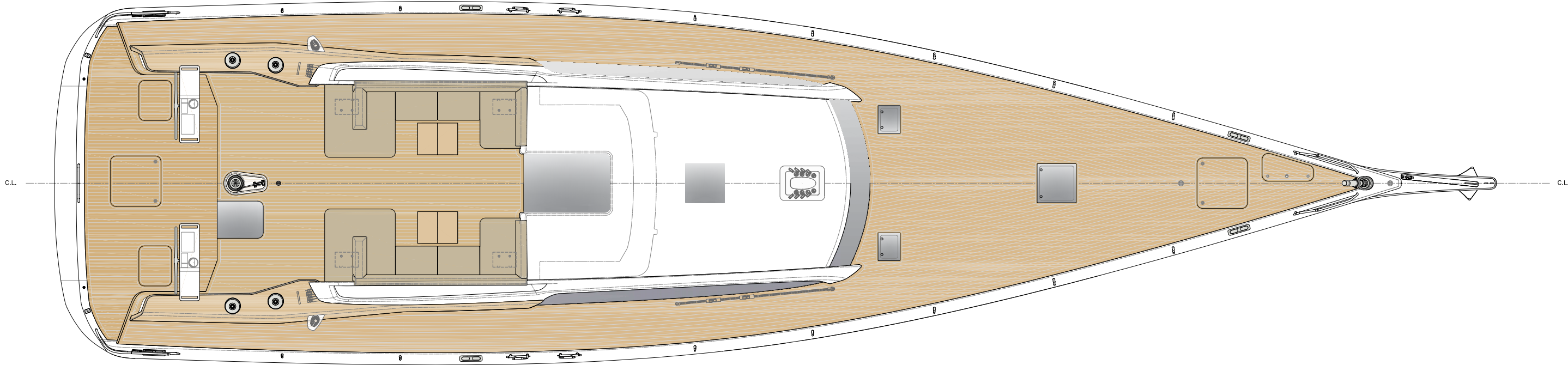
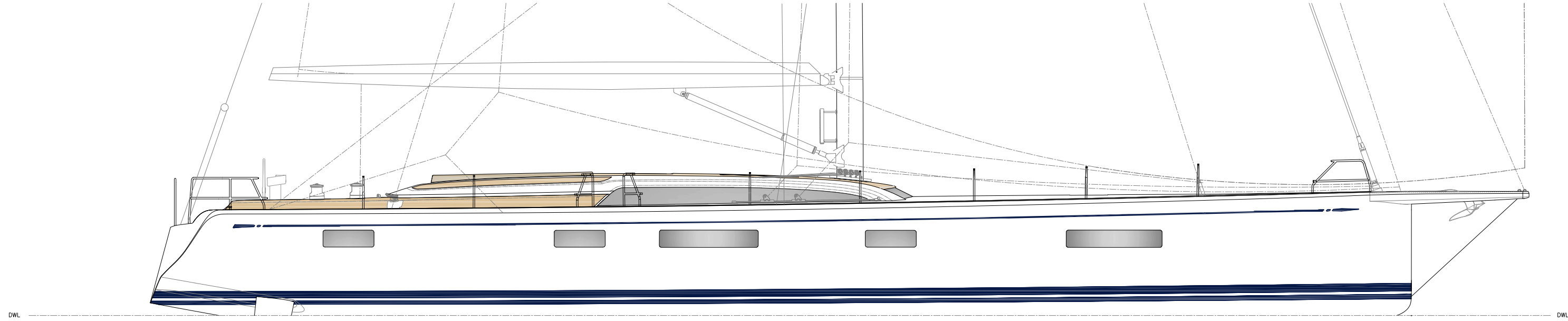




Standard



With options









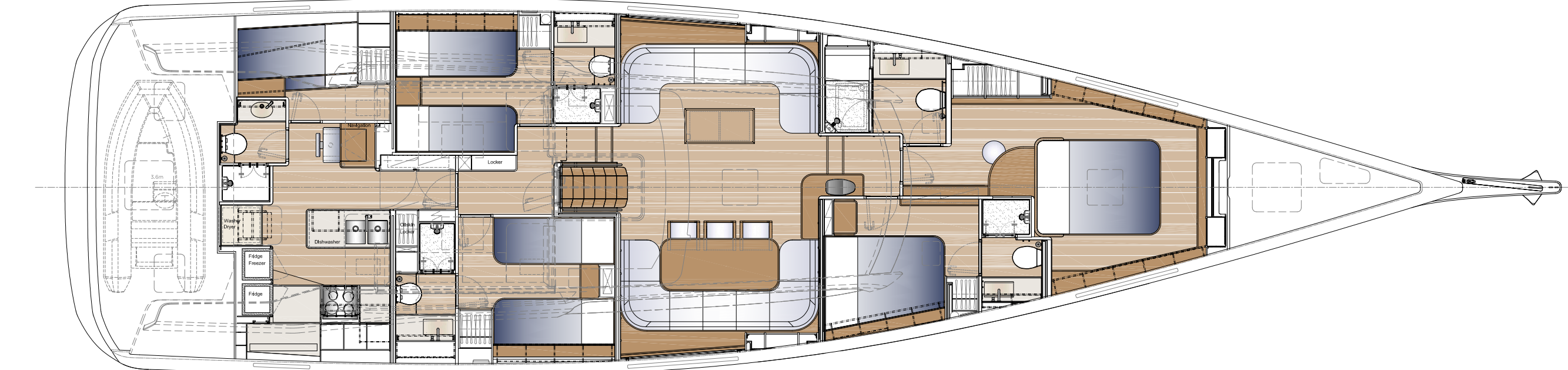
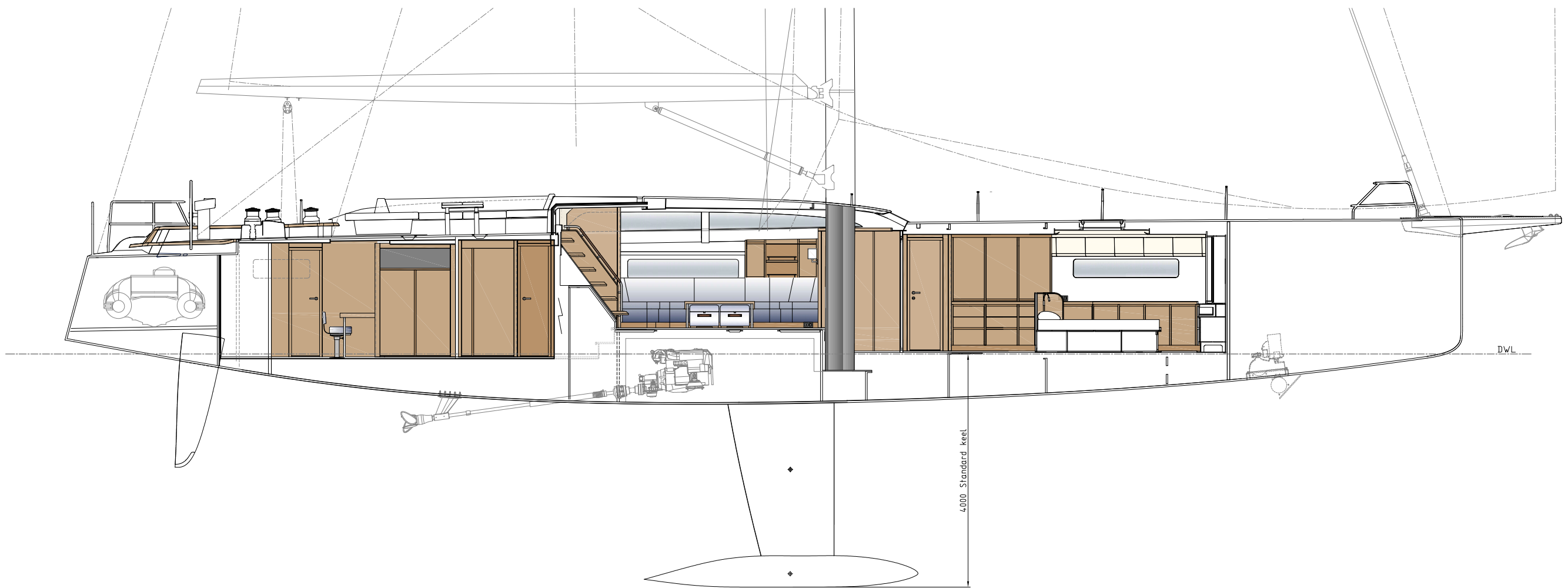




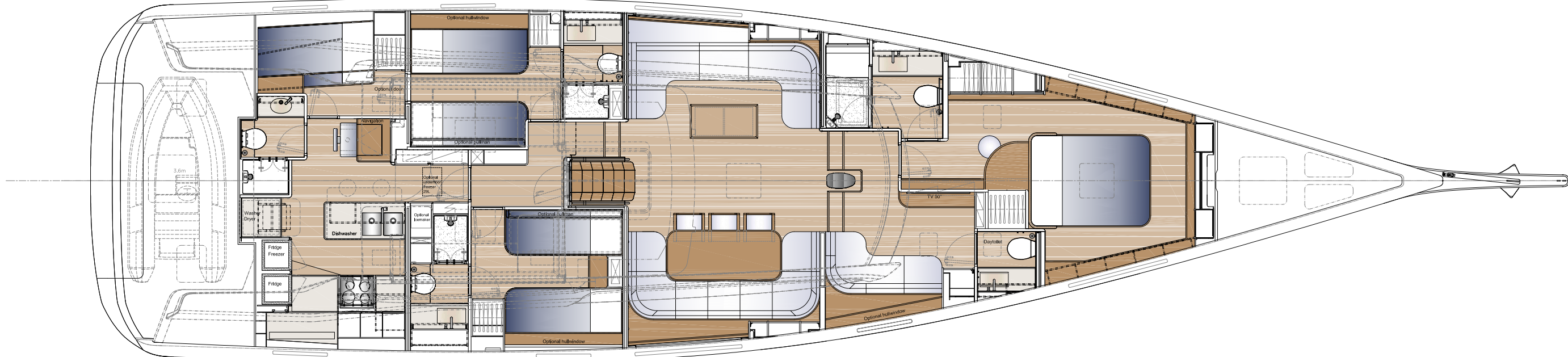
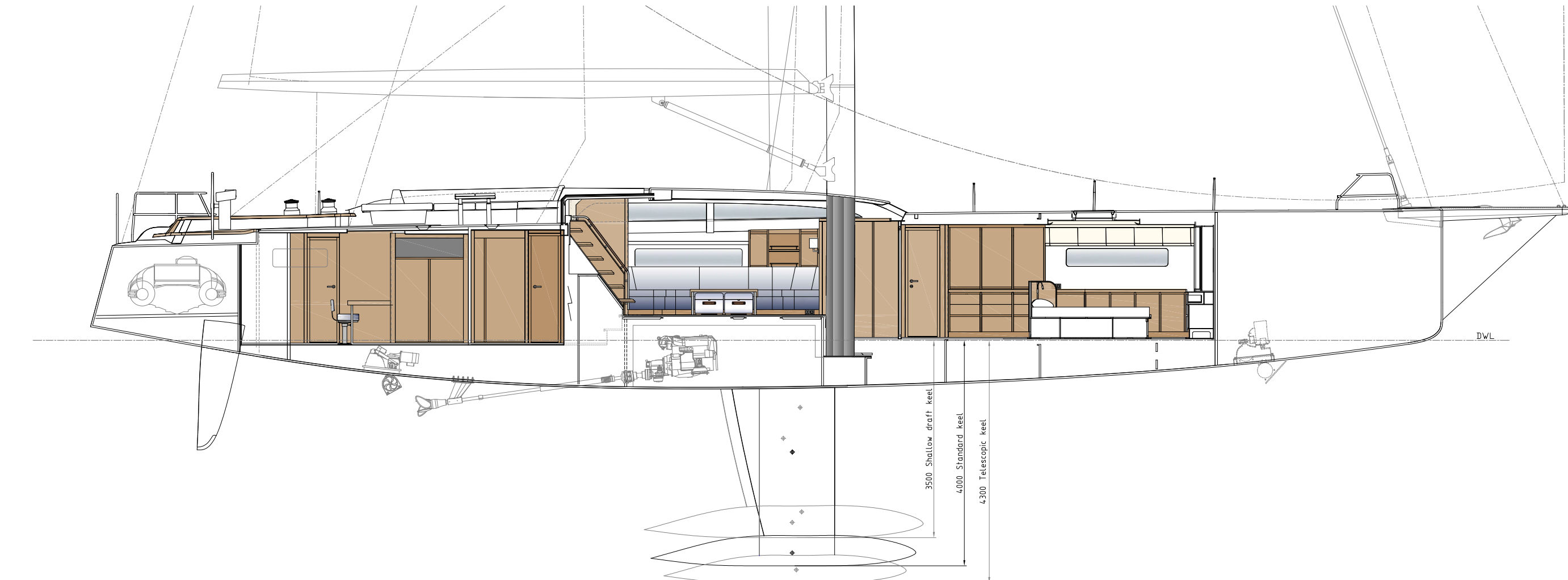




Standard



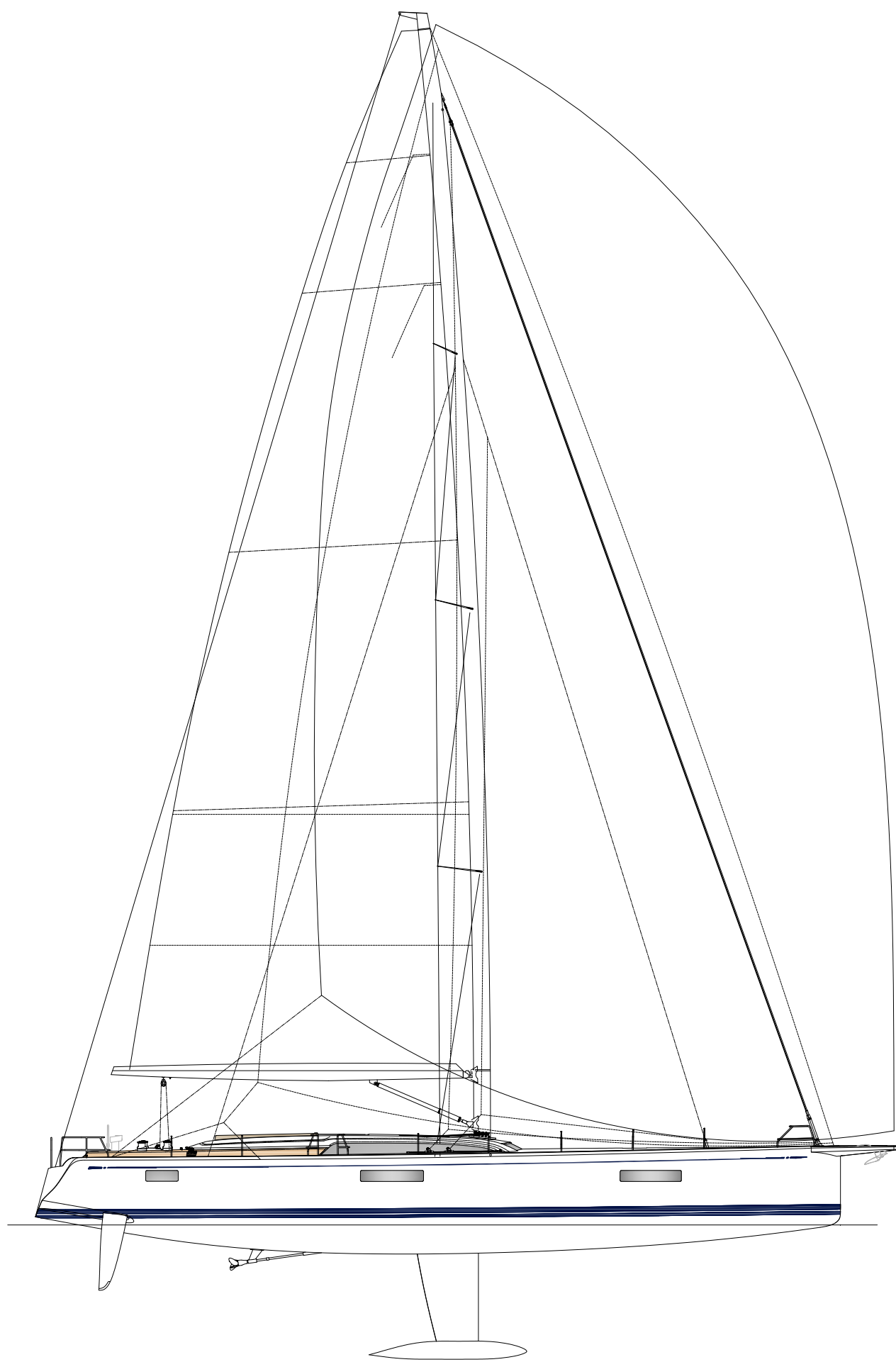
With options



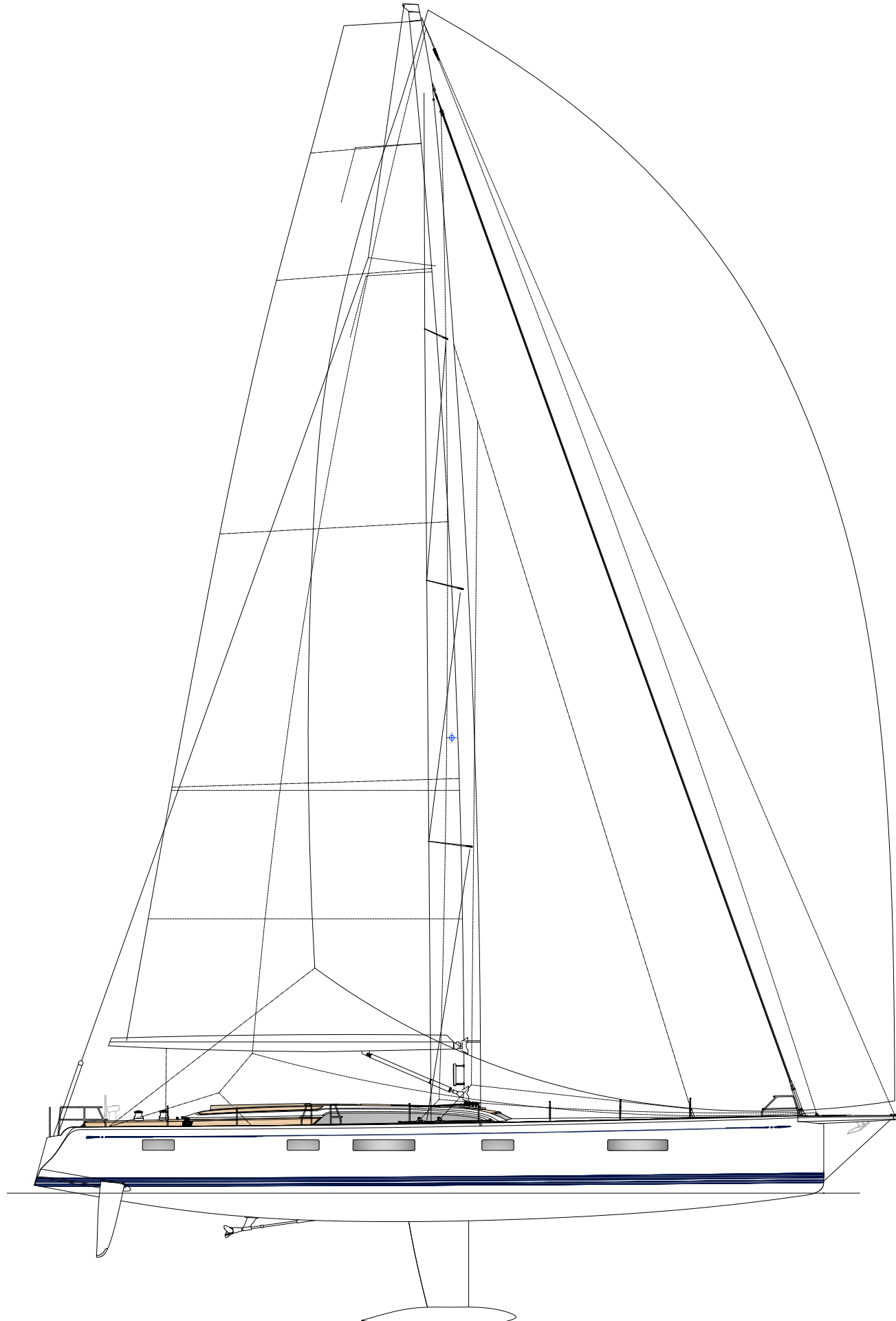








Standard



With options

## Specification

### General

Length of hull	23.99 m	78.70 ft
LOA	25.55 m	83.82 ft
LWL	22.18 m	72.77 ft
Beam max	6.40 m	21.00 ft
Draught	4.00 m	13.12 ft
Displacement (light)	42.600 kg	93.916 lbs
Ballast	11.600 kg	25.573 lbs
Engine Steyr SE186E38	129 kW	175 Hp

### Rig and sail dimensions

IG	31.60 m	103.67 ft
J	9.77 m	32.05 ft
P	31.00 m	101.71 ft
E	10.25 m	33.63 ft
Fore triangle	154.4 m²	1.662 sq.ft
Main sail	196.0 m²	2.110 sq.ft
Jib (ORC)	174.3 m²	1.876 sq.ft

### Tank capacity

Fuel	2.000 l	528 USg
Water	1.300 l	343 USg
Hot water	100 l	71 USg

### Construction Approval

CE-Approval: Category A Ocean

### Naval Architect

Frers Naval Architecture & Engineering







This catalogue contains non-contractual descriptive information about Nautor Swan yachts including drawings, photographs as well as other data. All such information is subject to change at any time without prior notice and does not represent an exact description of any particular yacht. Photos or diagrams could include special equipment that is not part of the equipment supplied by the boatyard. All the information, figures, photographs and data provided in this catalogue are exclusive copyright, industrial property right and property of Nautor Swan.



